



Administrations

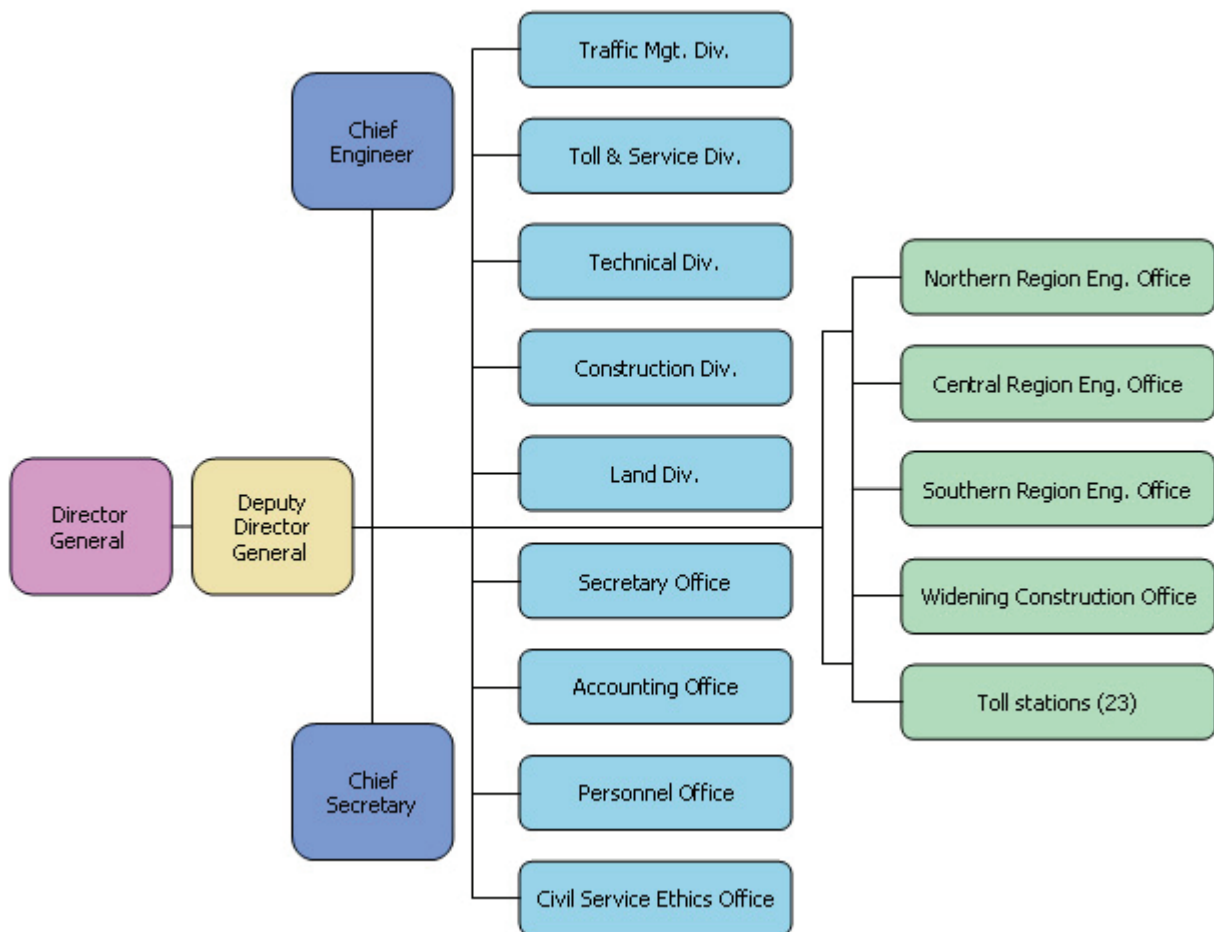
1) History and Responsibilities

This Bureau was established on June, 8, 1970 with the name: the Freeway Construction Bureau, which was responsible for Freeway construction. On October 31, 1978, Freeway No. 1 Sun Yat-San Freeway was completed with entire line opened for traffic accordingly. After the completion of said project, this Bureau was renamed as the Taiwan Area National Freeway Bureau (TANFB) on December 1, 1978 for handling the following items:

1. Maintenance and widening of the Freeway.
2. Traffic management and safeness of the Freeway.
3. Toll Collection.
4. Roadside facility operation and management.
5. Environment maintenance.
6. Management of land, and assets.
7. Research and development of the Freeway and other relevant matters.



2) Organisational Chart



↑ TOP

3) Current Staffing

Categories		Headquarters	Northern Region Eng. Office N.E.B.	Central Region Eng. Office N.E.B.	Southern Region Eng. Office N.E.B.	Widening Construction Office N.E.B.	Toll Station	Total
Employee	Technique	125	144	134	136	67	45	651
	Business	108	47	39	50	29	169	442
Workers, Technicians Janitors		9	10	7	6	26	26	84
Temp. Personnel	Employee	10	15	2	1	0	0	28
	Contracted Employee	0	63	24	24	0	1,052	1,163
	Contracted Worker	0	173	79	66	0	0	318
Total		252	452	285	283	122	1,292	2,686

Date: end of Dec, 2007

↑ TOP

4) Freeway Construction & Management Fund Budget Balance Sheet and

Budget Execution Status

(1) Balance Sheet

(Unit: NT\$1,000)

Assets	Amount	Liabilities and net value	Amount
Item		Item	
Assets	759,457,558	Liabilities	209,645,476
I. Current assets	4,148,817	I. Current liabilities	32,534,496
1. Cash	3,105,178	1. Short-term liabilities	18,600,000
2. Receivables	573,285	2. Payables	13,626,244
3. Inventories	68,033	3. Advance receipts	308,252
4. Advance payments	402,321	II. Long-term liabilities	170,976,773
5. Short-term advancement	0	1. Long-term liabilities	170,976,773
II. Investment, long-term receivables, advance payment and reserves	218,029	III. Other liabilities	6,134,207
1. Long-term advance payment	0	1. Miscellaneous liabilities	6,134,207
2. Reserves	218,029	2. Inter current accounts	0
III. Fixed assets	739,614,827	Net value	549,812,082
1. Land	197,602,822	I. Funds	465,188,643
2. Land improvements	255,050,591	1. Funds	465,188,643
3. Houses and buildings	9,871,603	II. Surplus Reserves	21,146,244
4. Machinery and equipment	3,365,531	1. Capital reserve	1,364,104
5. Traffic and transportation equipment	46,184,564	2. Special reserve	19,782,140
6. Miscellaneous. equipment	560,980	III. Accumulated deficits (-)	29,327,485
7. Fixed assets in process	226,978,736	1. Accumulated surplus	29,327,485
IV. Intangible assets	33,925	IV. Net value of other items	34,149,710
1. Intangible assets	33,925	1. Unrealized added value from asset re-evaluation	34,149,710
V. Other asset	15,441,960		
1. Miscellaneous assets	15,441,960		
2. Pending assets	0		
3. Inter current accounts	0		
Total	759,457,558	Total	759,457,558

 [TOP](#)

(2) Budget Execution Status

a. Business income/expenditure execution status

(Unit: NT\$1,000)

Item	Total Annual Budget	Yearly Final Account
------	---------------------	----------------------

Business Income	36,168,775	33,310,427
I. Labor revenue	25,740,835	23,322,032
1. Service revenue	1,549,575	1,370,918
2. Toll revenue	24,191,260	21,951,114
II. Other business revenue	10,427,940	9,988,395
1. Fuel income	10,349,662	9,889,771
2. Miscellaneous business revenue	78,278	98,624
Business Cost and expense	6,564,810	6,645,898
I. Labor cost	5,404,771	5,474,991
1. Maintenance Cost	2,977,563	2,849,109
2. Management Cost	2,427,208	2,625,882
3. Other service costs	—	—
II. Management and general affairs cost	1,160,039	1,170,907
Business Surplus	29,603,965	26,664,529
Non-operating revenue	662,832	989,094
Non-operating expenses	9,822,555	10,386,237
Non-operating surplus	-9,159,723	-9,397,143
Surplus of this period	20,444,242	17,267,386

b. Capitol Expenditure Project Implementation

(Unit: Nt\$1,000)

Item	Accumulated budget of this fiscal year	Accumulated budget executed in this fiscal year (including retained budget)
1. Project-based capital expenditure	32,976,604	32,199,972
2. General cons. and equipment capital expenditure	462,850	462,226
Total	33,439,454	32,662,198


 [TOP](#)

