

2



II. Administrations

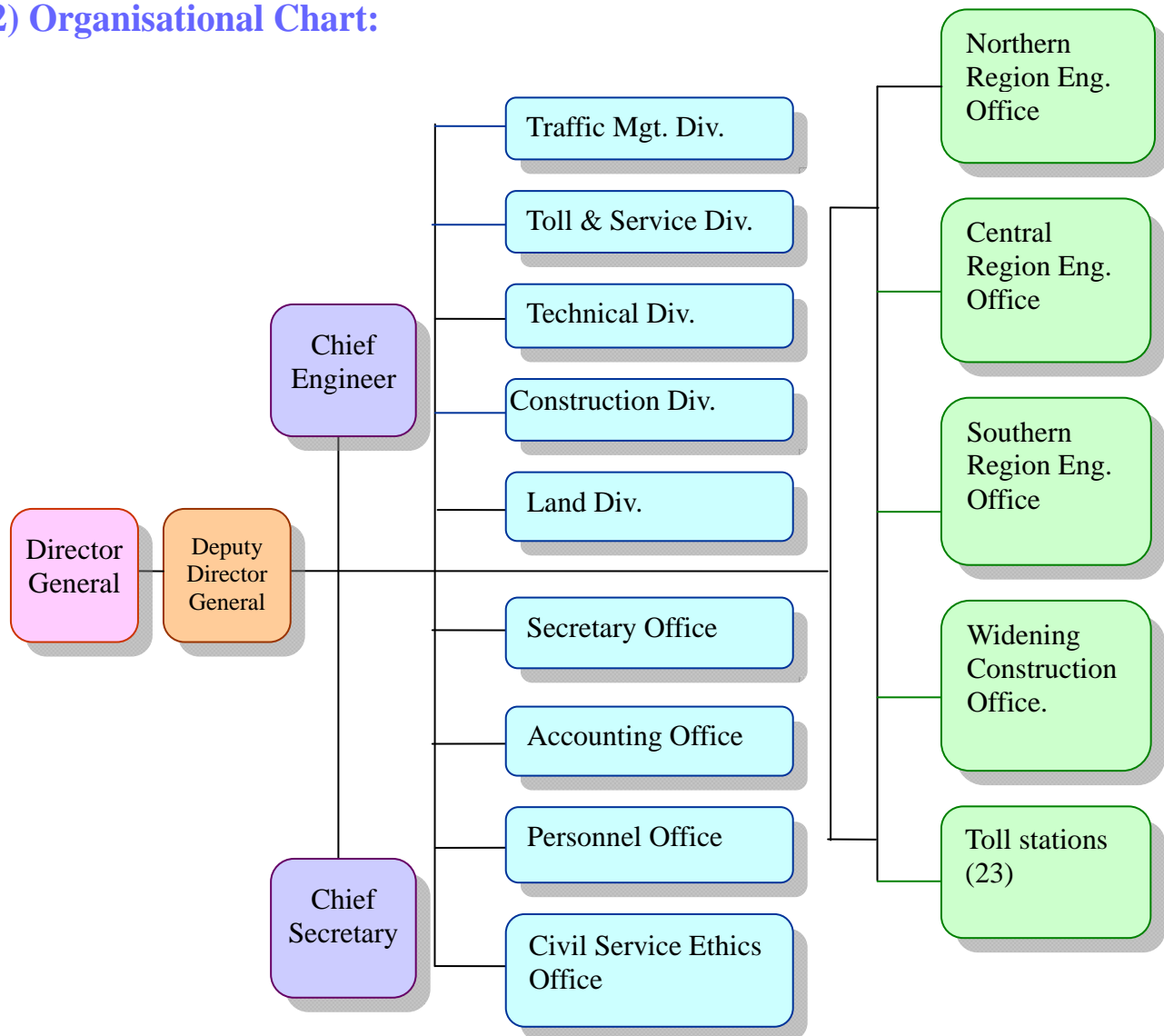
1) History and Responsibilities :

This Bureau was established on June 8, 1970 with the name: the Freeway Construction Bureau, which was responsible for Freeway construction. On October 31, 1978, Freeway No.1 Sun Yat-San Freeway was completed with entire line opened for traffic accordingly. After the completion of said project, this Bureau was renamed as the Taiwan Area National Freeway Bureau (TANFB) on December 1, 1978 for handling the following items:

- (1) Maintenance and widening of the Freeway.
- (2) Traffic management and safeness of the Freeway.
- (3) Toll Collection.
- (4) Roadside facility operation and management.
- (5) Environment maintenance.
- (6) Management of land, and assets.
- (7) Research and development of the Freeway and other relevant matters.



2) Organisational Chart:



3) Current Staffing:

Categories		Headquarters	North Region Eng. Office	Central Region Eng. Office	Southern Region Eng. Office	Widening Construction Office.	Toll station	Total
			T.A.N.F.B.	T.A.N.F.B.	T.A.N.F.B.	T.A.N.F.B.		
Employee	Technique	125	138	133	123	69	44	632
	Business	106	44	39	51	25	159	424
Workers, Technicians and Janitors		9	10	8	6	26	26	85
Temporary personnel	Employee	10	15	2	1	0	0	28
	Contracted Employee	0	62	24	22	0	1,050	1,158
	Contracted Worker	0	173	78	65	0	0	316
Sub-total		250	442	284	268	120	1,279	2,643

Date: end of Dec, 2008



4) National Freeway Construction Finance management

(1) 2008 Budget and Balance

a. Balance Sheet

Unit: NT\$1,000

Assets	Amount	Liabilities and net value	Amount
Item		Item	
Assets	787,515,096	Liabilities	215,641,410
A. Current assets	3,845,819	A. Current liabilities	38,806,688
1. Cash	3,172,045	1. Short-term liabilities	24,300,000
2. Receivables	419,746	2. Payables	14,195,642
3. Inventories	83,922	3. Advance receipts	311,046
4. Advance payment	170,106	B. Long-term liabilities	171,018,944
5. Short-term advance payment	—	1. Long-term liabilities	171,018,944
B. Investment, long-term receivables, advance payment and reserves	196,680	C. Other liabilities	5,815,778
1. Long-term advance payment	—	1. Miscellaneous liabilities	5,815,778
2. Reserves	196,680	2. Inter current accounts	—
C. Fixed assets	768,212,636	Net value	571,873,686
1. Land	220,356,466	A. Fund	491,204,610
2. Land improvements	268,311,289	1. Fund	491,204,610
3. House and building	9,913,038	B. Surplus reserves	17,744,332
4. Machinery and equipments	3,595,149	1. Capital reserve	1,379,992
5. Traffic and transportation equipments	46,729,528	2. Special reserve	16,364,340
6. Miscellaneous equipments	619,842	C. Accumulated surplus and deficits(-)	28,775,034
7. Fixed assets in process	218,687,324	1. Accumulated surplus	28,775,034
D. Intangible assets	35,800	D. Net value of other items	34,149,710
1. Intangible assets	35,800	1. Unrealized added value from asset revaluation	34,149,710
E. Other assets	15,224,161		
1. Miscellaneous assets	15,224,161		
2. Pending assets	—		
3. Inter current accounts	—		
Total	787,515,096	Total	787,515,096



b. Budget Execution Status

(a) Business income/expenditure execution status

Unit: NT\$1,000

Item	Total Annual Budget	Yearly Final Account
Business Income	36,349,984	31,735,796
A. Labor revenue	25,784,223	21,829,707
1. Service revenue	1,592,963	1,332,151
2. Toll revenue	24,191,260	20,497,556
B. Other business revenue	10,565,761	9,906,089
1. Fuel revenue	10,472,753	9,798,759
2. Miscellaneous business revenue	93,008	107,330
Business cost and expense	7,041,539	7,008,314
A. Labor cost	5,862,023	5,806,863
1. Maintenance cost	3,239,207	3,056,818
2. Management cost	2,622,816	2,750,045
3. Other labor cost	—	—
B. Management and general affairs cost	1,179,516	1,201,451
Business surplus	29,308,445	24,727,482
Non-operating revenue	664,663	996,806
Non-operating expenses	9,482,945	9,735,131
Non-operating surplus	-8,818,282	-8,738,325
Surplus of This Period	20,490,163	15,989,157

(b) Capital Expenditure Project Implementation

Unit: NT\$1,000

Item	Accumulated budget of this fiscal year	Accumulated budget executed in this fiscal year (including retained budget)
1. Project-based capital expenditure	32,214,016	32,213,093
2. General construction and equipment capital expenditure	412,393	363,019
Total	32,626,409	32,576,112