



# 2 Administrations

## 1 History and Responsibilities

Our bureau was established on June 8, 1970 and called Freeway Engineering Bureau, which was in charge of the freeway construction. On October 31, 1978, the construction of No.1 Sun Yat-Sen Freeway was completed with the entire line opened to traffic accordingly. After the completion of said project, this Bureau was renamed as Taiwan Area National Freeway Bureau (TANFB) on December 1, 1978 for handling the following items:

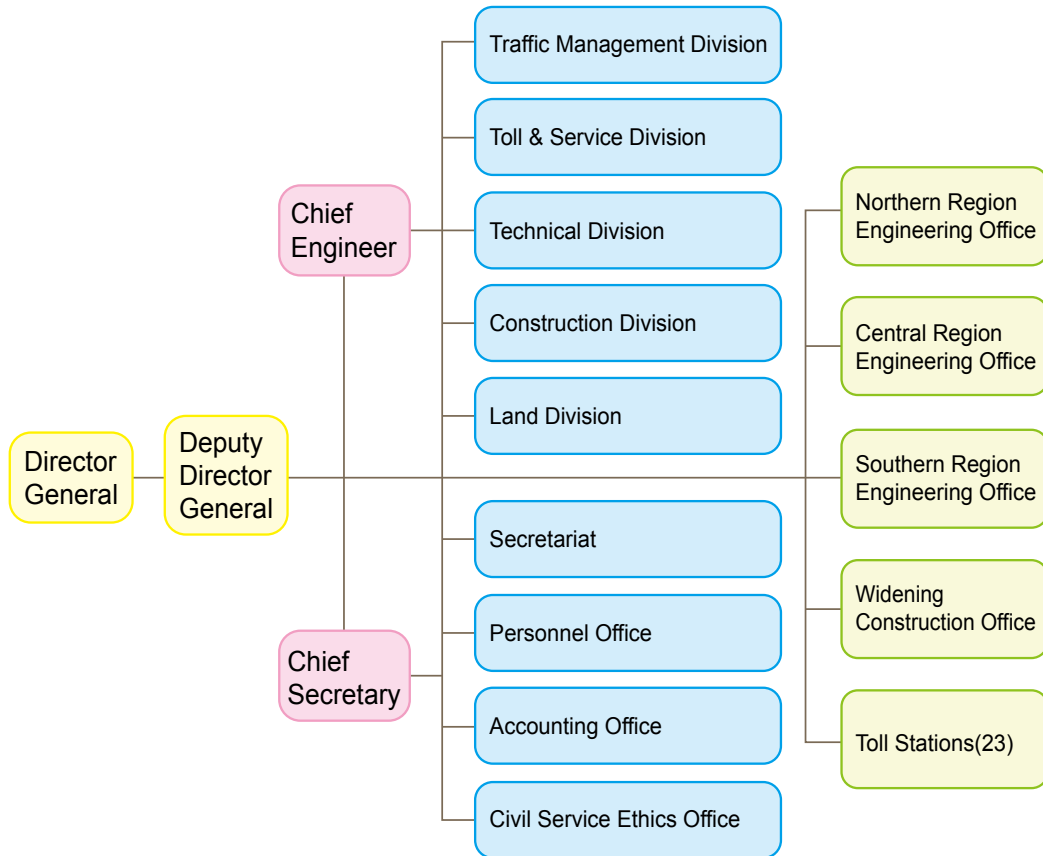
- (1) Maintenance and expansion of the freeway.
- (2) Traffic management and safety maintenance of the freeway.
- (3) Toll collection of the freeway.
- (4) Operation and management of roadside facilities along the freeway.
- (5) Environment arrangement and maintenance along the freeway.
- (6) Preparation, preservation and implementation of land, houses and other



assets as well as property treatment for the freeway.

(7) Research and development of the freeway and other relevant matters.

## 2 Organizational Chart



## 3 Current Staffing

Category \ Unit		Headquarter	Northern Region Eng. Office	Central Region Eng. Office	Southern Region Eng. Office	Widening Construction Office	Toll Station	Total
Employee	Technical	113	119	111	104	65	29	541
	Business	100	39	36	51	26	117	369
Workers, Technicians and Janitors		9	10	8	6	26	19	78
Temporary Personnel	Employee	10	15	5	1	0	0	31
	Contracted Employee	0	63	33	22	0	1,010	1,128
	Contracted worker	0	165	75	61	0	0	301
Subtotal		232	411	268	245	117	1,175	2,448

Date of Information: End of December 2012

## 4 Establishment, Process, and Current Implementation Status of the “National Freeway Construction & Management Fund”

### (1) Reasons of Fund Establishment:

The cost of constructing and maintaining the national freeways is extremely large. To avoid the influence of budget cuts or allocation of overall financial resources, the “National Freeway Construction & Management Fund” (the “Fund”) was established with the financial principles of “User-pay, Special purpose, Special Fund, and cycling utilization” to help achieve desired construction goals and to effectively promote and manage national freeway construction projects that are revenue-producing in nature and possess earmarked funds. In addition, the Fund is also used to collectively handle such matters as the construction, operation, maintenance, management and self-liquidating financing of the national freeway projects.

### (2) Bases and Attributes of the Fund

1. In accordance with Article 28 of the Highway Act and the Standards for Special Fund Management of Central Government, the “National Freeway Construction & Management Fund, MOTC” was established in 1994.
2. In 1999, the Fund was merged into the “Traffic Construction Fund - National Freeway Construction & Management Fund” as a sub-budget. In 2003, in accordance with the Non-business Fund, it was re-classified and merged into the “Traffic Operation Fund - National Freeway Construction & Management Fund” as a sub-budget.
3. In accordance with Article 20 of the Budget Law, the budget of the National Freeway Construction & Management Fund is a sub-budget of subsidiary unit budget, and a special fund as defined under Article 4 Item 1 Paragraph 2 Section 4 “when paid out can still be recovered, instead of being used for business.”



### (3) Fund Sources and Uses:

Based on the “Regulations for Income, Disbursement, Custody and Utilization of Traffic Operations Fund” which was approved by the Executive Yuan, the sources and uses of the Fund are explicitly stated.

#### 1. Sources:

Appropriation followed by government's budget process, toll revenue levied from vehicles passing on the national freeways, revenue of vehicle fuel fees that are allocated for national freeway road construction, income from service related facilities, income from the disposition of construction land obtained through zone expropriation or expropriation compensation, accrued interest income of the Fund, donation income, and other relevant income.

#### 2. Uses:

National freeway road construction and facility expansion that are revenue-producing in nature, improvement expenditures, development costs for construction land obtained through zone expropriation, national freeway maintenance and management expenses, interest and fee expenses for the financing of the Fund, promotion of the national freeways, promotion programs, training, research and development expenditures, management and general administration expenditures, and other related expenses.

### (4) Changes in the Accounting Treatment of the Fund

In keeping up with the global trend and promoting the new accounting system for all kinds of communiques, the Directorate General of Budget, Accounting and Statistics, Executive Yuan has specified that when treating the accounting transactions of operating funds, unless otherwise provided by law, all accounting transactions shall be in accordance with No. 8 of the Government Accounting Standards Communique as well as the relevant rules and regulations stated in other government accounting communiques. In addition, the flow of economic resources is used as the main form of measurement and accrual accounting is used as the basis for processing.

## 5 National Freeway Construction & Management Fund - 2012 Annual Budget Balance and the Status of Implementation

### 1. Balance Sheet

Unit: NT\$ 1,000

Assets	Amount	Liabilities and Net Worth	Amount
Title/Name		Title/Name	
Assets	903,613,973	Liabilities	235,624,448
1. Current Assets	8,289,670	1. Current Liabilities	73,864,228
(1) Cash	7,070,751	(1) Short-term Liabilities	59,049,554
(2) Receivables	323,528	(2) Payables	14,504,811
(3) Inventory	60,336	(3) Advance receipts	309,863
(4) Prepayments	835,055	2. Long-term Liabilities	155,403,556
(5) Temporary payments for others	0	(1) Long-term Liabilities	155,403,556
2. Investments, Long-term Receivables, Loans, Advances and Provisions	255,707	3. Other Liabilities	6,356,664
(1) Long-term payments for others	0	(1) Miscellaneous liabilities	6,356,664
(2) Reserve Fund	255,707	(2) Inter Current Accounts	0
3. Fixed Assets	880,570,033	Net Worth	667,989,525
(1) Land	241,380,703	1. Funds	607,242,650
(2) Land improvements	329,611,897	(1) Funds	607,242,650
(3) Buildings	11,641,319	2. Surplus Reserve	1,443,851
(4) Machinery and equipment	4,969,183	(1) Capital Reserve	1,443,851
(5) Transportation and communication equipment	50,416,359	(2) Special Reserve	0
(6) Miscellaneous equipment	652,126	3. Accumulated Surplus (-)	15,153,601
(7) Fixed assets in process	241,898,446	(1) Accumulated surplus	15,153,601
4. Intangible Assets	53,213	4. Net worth of other Items	44,149,423
(1) Intangible assets	53,213	(1) Unrealized revaluation increment	44,149,423
5. Other Assets	14,445,350		
(1) Non-operating assets	89,363		
(2) Miscellaneous assets	14,355,987		
(3) Inter current Accounts	0		
Total	903,613,973	Total	903,613,973



## 2.Implementation Status

## (1) Operating Revenue and Expenses Implementation Status

Unit: NT\$ 1,000

Item	Annual Budget Amount	Annual Final Accounts Amount
Agency revenue	33,588,283	32,525,546
1.Service Revenue	23,223,776	22,311,166
(1)Providing Service	651,336	684,061
(2)Toll revenue	22,572,440	21,627,105
2.Other Agency Revenue	10,364,507	10,214,380
(1)Fuel Revenue	10,271,770	10,110,741
(2)Miscellaneous agency revenue	92,737	103,639
Agency cost and expense	9,259,670	10,999,571
1. Service Cost	6,823,641	7,724,830
(1)Maintenance cost	4,403,641	4,957,147
(2)Management cost	2,420,000	2,767,683
(3)Other service cost	0	0
2.Management and General Affairs Expense	2,436,029	3,274,741
Agency Surplus	24,328,613	21,525,975
Non-operating revenue	594,303	695,549
Non-operating expense	7,101,778	6,972,347
Non-operating Surplus	-6,507,475	-6,276,798
Surplus of this term	17,821,138	15,249,177

## (2) Capital Expenditures Plan Implementation Status

Unit: NT\$ 1,000

	Current year available budget	Accumulated implementations executed this year (including retained budget for the next year)
1. Project plans capital expenditure	28,635,682	28,454,004
2. General building and equipment capital expenditures	2,296,495	2,280,916
Total	30,932,177	30,734,920