



XI. Annual Statistics



1) Freeway Construction & Management Fund

(1) Budget Balance Sheet and Budget Execution Status from 2004 to 2008

a. Balance Sheet

Unit: NT\$1,000

	2004	2005	2006	2007	2008
Assets	687,308,832	714,748,887	735,905,768	759,457,558	787,515,096
A. Current Assets	5,696,949	5,421,875	5,101,600	4,148,817	3,845,819
B. Long-term Investment, Receivables, Advance Payments and Reserves	311,265	286,815	216,942	218,029	196,680
C. Fixed Assets	667,675,356	696,056,536	717,447,589	739,614,827	768,212,636
D. Intangible Assets	25,487	26,407	24,053	33,925	35,800
E. Other Assets	13,599,775	12,957,253	13,115,584	15,441,960	15,224,161
Total	687,308,832	714,748,887	735,905,768	759,457,558	787,515,096
Liabilities	200,913,975	204,059,278	204,757,350	209,645,476	215,641,410
A. Current Liabilities	19,859,472	27,386,499	27,681,856	32,534,496	38,806,688
B. Long-term Liabilities	175,358,920	170,892,431	170,934,602	170,976,773	171,018,944
C. Other Liabilities	5,695,583	5,780,348	6,140,892	6,134,207	5,815,778
Net Value	486,394,857	510,689,609	531,148,418	549,812,082	571,873,686
A. Fund	414,669,872	420,824,827	423,514,717	465,188,643	491,204,610
B. Surplus Reserves	35,272,786	35,352,785	41,641,753	21,146,244	17,744,332
C. Accumulated Surplus	36,452,199	54,511,996	31,842,238	29,327,485	28,775,034
D. Net Value of Other Items	0	0	34,149,710	34,149,710	34,149,710
Total	687,308,832	714,748,887	735,905,768	759,457,558	787,515,096

**(2)-1 Execution Status of 2004 and 2005****a) Business Income / Expenditure Execution Status**

Unit: NT\$1,000

Year	2004		2005	
Item	Budget amount	Final Amount	Budget amount	Final Amount
Business Income	32,843,805	32,725,167	34,283,199	33,295,285
A. Labor Revenue	23,872,489	23,283,558	25,001,171	23,610,794
B. Other Business Revenue	8,971,316	9,441,609	9,282,028	9,684,491
Business Cost and Expense	5,669,547	5,263,717	5,423,250	5,658,519
A. Labor Cost	4,486,165	4,209,588	4,265,679	4,543,742
B. Management and General Affairs Cost	1,183,382	1,054,129	1,157,571	1,114,777
Business Surplus	27,174,258	27,461,450	28,859,949	27,636,766
Non-operating Revenue	714,630	739,728	716,139	999,237
Non-operating Expenses	10,024,858	9,992,694	10,458,541	10,576,205
Non-operating Surplus	-9,310,228	-9,252,966	-9,742,402	-9,576,968
Surplus of This Period	17,864,030	18,208,484	19,117,547	18,059,798

b) Capital Expenditure Project Implementation

Unit: NT\$1,000

Year	2004		2005	
Item	Accumulated Budget of This Fiscal Year	Accumulated Budget Executed in This Fiscal Year (Including Retained Budget)	Accumulated Budget of This Fiscal Year	Accumulated Budget Executed in This Fiscal Year (Including Retained Budget)
1. Project-based Capital Expenditure	26,239,688	26,215,545	35,389,380	35,304,030
2. General Construction and equipment Capital Expenditure	301,727	289,226	511,849	497,926
Total	26,541,415	26,504,771	35,901,229	35,801,956



(2)-2 Execution Status of 2006 to 2008

a) Business Income / Expenditure Execution Status

Unit: NT\$1,000

Year	2006		2007		2008	
	Budget amount	Final Amount	Budget amount	Final Amount	Budget amount	Final Amount
Business Income	35,998,808	33,344,909	36,168,775	33,310,427	36,349,984	31,735,796
A. Labor Revenue	26,370,815	23,547,729	25,740,835	23,322,032	25,784,223	21,829,707
B. Other Business Revenue	9,627,993	9,797,180	10,427,940	9,988,395	10,565,761	9,906,089
Business Cost and Expense	5,969,722	6,309,804	6,564,810	6,645,898	7,041,539	7,008,314
A. Labor Cost	4,772,696	5,166,844	5,404,771	5,474,991	5,862,023	5,806,863
B. Management and General Affairs Cost	1,197,026	1,142,960	1,160,039	1,170,907	1,179,516	1,201,451
Business Surplus	30,029,086	27,035,105	29,603,965	26,664,529	29,308,445	24,727,482
Non-operating Revenue	593,412	802,520	662,832	989,094	664,663	996,806
Non-operating Expenses	9,989,057	10,227,409	9,822,555	10,386,237	9,482,945	9,735,131
Non-operating Surplus	-9,395,645	-9,424,888	-9,159,723	-9,397,143	-8,818,282	-8,738,325
Surplus of This Period	20,633,441	17,610,217	20,444,242	17,267,386	20,490,163	15,989,157

b) Capital Expenditure Project Implementation

Unit: NT\$1,000

Year	2006		2007		2008	
	Accumulated Budget of This Fiscal Year	Accumulated Budget Executed in This Fiscal Year (Including Retained Budget)	Accumulated Budget of This Fiscal Year	Accumulated Budget Executed in This Fiscal Year (Including Retained Budget)	Accumulated Budget of This Fiscal Year	Accumulated Budget of This Fiscal Year (Including Retained Budget)
1. Project-based Capital Expenditure	30,214,510	30,147,250	32,976,604	32,199,972	32,214,016	32,213,093
2. General Construction and Equipment Capital Expenditure	363,083	360,291	462,850	462,226	412,393	363,019
Total	30,577,593	30,507,541	33,439,454	32,662,198	32,626,409	32,576,112



2) Traffic Status

(1) Traffic Volume over the Years

a. Vehicles Passing Toll Stations over the Years

Unit: Car

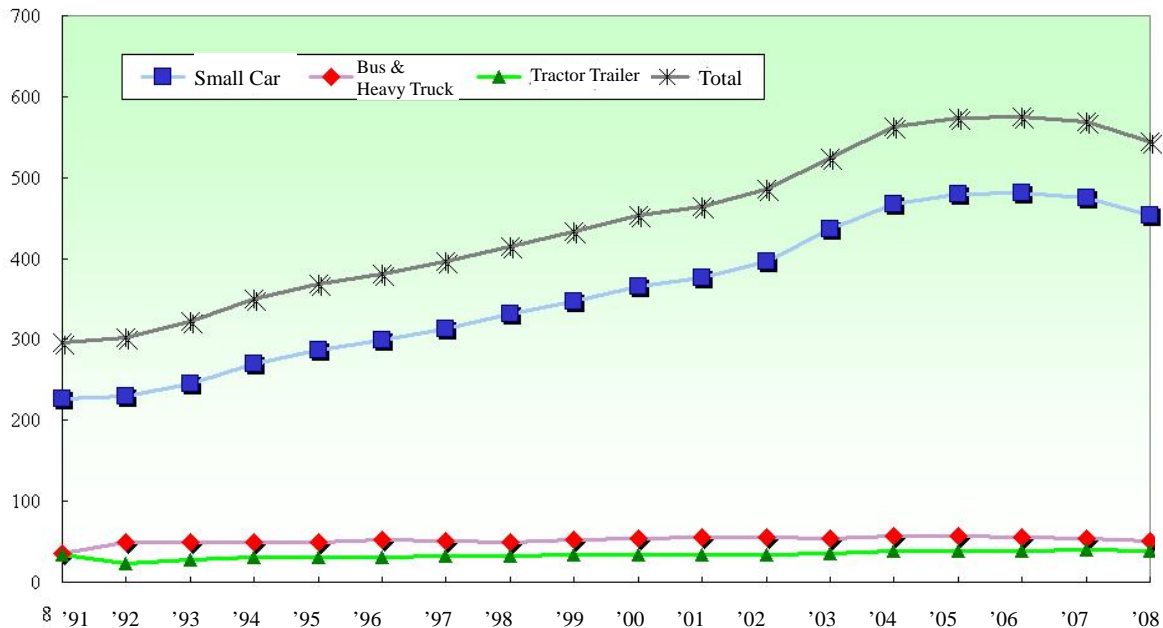
Year	Small Car	Bus / Heavy Truck	Tractor Trailer	Total	Yearly Growth Rate	Millions Vehicles Km
1975 to 1979	88,027,667	35,681,566	17,149,430	140,858,663	-	5,509.2
1980 to 1984	347,819,234	117,596,960	77,552,806	542,969,000	-	21,025.7
1985 to 1989	689,033,698	148,126,243	133,589,907	970,749,848	-	38,789.8
1990	218,342,374	34,800,994	32,544,093	285,687,461	-	11,539.0
1991	226,159,292	35,894,432	33,562,272	295,615,996	3.48%	11,891.9
1992	230,006,083	49,132,718	23,169,694	302,308,495	2.26%	12,236.3
1993	245,552,345	49,391,778	27,155,654	322,099,777	6.55%	12,685.0
1994	269,779,368	49,964,388	30,937,583	350,681,339	8.87%	13,730.9
1995	287,060,705	50,090,362	31,002,160	368,153,227	4.98%	14,450.0
1996	298,457,249	51,909,202	30,520,063	380,886,514	3.46%	14,829.9
1997	313,538,925	50,133,044	32,652,093	396,324,062	4.05%	15,343.8
1998	331,629,688	50,054,717	32,565,448	414,249,853	4.52%	15,703.4
1999	346,846,068	52,979,020	34,156,987	433,982,075	4.76%	16,371.7
2000	365,321,033	54,289,832	34,200,214	453,811,079	4.57%	19,973.4
2001	375,777,088	55,336,086	33,588,677	464,701,851	2.40%	21,571.7
2002	395,709,620	55,804,880	34,382,771	485,897,271	4.56%	22,670.8
2003	435,632,839	54,137,373	34,954,139	524,724,351	7.99%	23,872.7
2004	467,876,262	57,254,601	38,037,516	563,168,379	7.33%	25,678.6
2005	479,143,420	56,480,534	38,185,268	573,809,222	1.89%	26,050.9
2006	480,594,647	55,241,451	38,877,139	574,713,237	0.16%	26,235.5
2007	475,502,719	54,347,929	39,791,876	569,642,524	-0.88%	25,950.0
2008	453,931,505	50,347,601	39,268,902	543,548,008	-4.58%	24,649.9
Total	7,821,741,829	1,268,995,711	867,844,692	9,958,582,232	4.17%	420,759.6

Note: For the statistics prior to 1991, the column of bus/truck was for heavy trucks whereas the column of tractor trailer was for passenger buses.



b. Chart of Traffic Growth over the Years

Million Vehicle



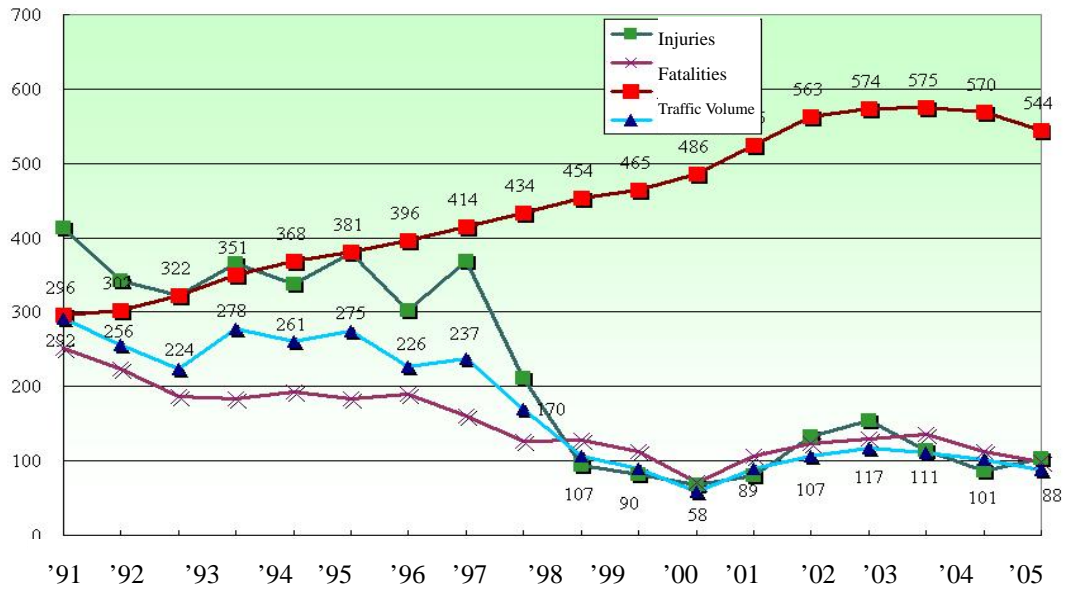
(2) Traffic Accident Analysis

a. Traffic Accident Statistics over the Years

Year	Million Vehicles Km (MVK)	Number of Accidents (case)	Accidents Rate (case/MVK)	Death (person)	Death Rate (person/MV K)	Injury (person)	Injury Rate (person/MV K)
1975 to 1979	5,509.2	780	0.1416	305	0.0554	1,743	0.3164
1980 to 1984	21,025.7	1,448	0.0689	674	0.0321	2,801	0.1332
1985 to 1989	38,789.8	1,480	0.0382	838	0.0216	2,580	0.0665
1990	11,539.0	405	0.0351	359	0.0311	642	0.0556
1991	11,891.9	292	0.0246	251	0.0211	413	0.0347
1992	12,236.3	256	0.0209	223	0.0182	343	0.0280
1993	12,685.0	218	0.0172	181	0.0143	319	0.0251
1994	13,730.9	278	0.0202	184	0.0134	365	0.0266
1995	14,450.0	261	0.0181	192	0.0133	338	0.0234
1996	14,829.9	275	0.0185	183	0.0123	379	0.0256
1997	15,343.8	226	0.0147	189	0.0123	302	0.0197
1998	15,703.4	237	0.0151	160	0.0102	369	0.0235
1999	16,371.7	170	0.0104	126	0.0077	211	0.0129
2000	19,973.4	107	0.0054	128	0.0064	94	0.0047
2001	21,571.7	90	0.0042	112	0.0052	82	0.0038
2002	22,670.8	58	0.0026	71	0.0031	68	0.0030
2003	23,872.7	89	0.0037	107	0.0045	80	0.0034
2004	25,678.6	107	0.0042	124	0.0048	133	0.0052
2005	26,050.9	117	0.0045	129	0.0050	154	0.0059
2006	26,235.3	111	0.0042	135	0.0051	114	0.0043
2007	25,950.0	101	0.0039	112	0.0043	86	0.0033
2008	24,649.9	88	0.0036	98	0.0040	104	0.0042
Total	420,759.6	7,200	0.017	4,887	0.0116	11,723	0.0279



b. Chart of Traffic Growth and Accident Rate over the Years

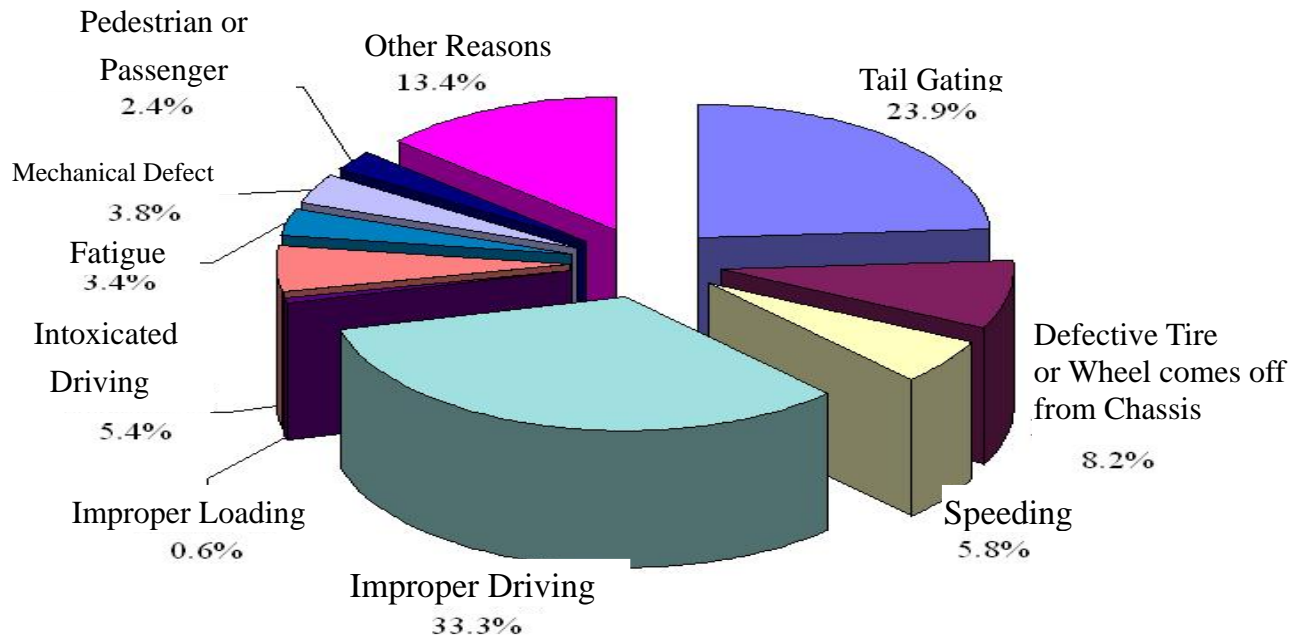


c. Statistics of Causes of Accident over the Years

Year	Tail Gating	Defective Tire or Wheel comes off from Chassis	Speeding	Improper Driving	Improper Loading	Intoxicated Driving	Fatigue	Mechanical Defect	Pedestrian or Passenger Violation	Other Reasons	Total
1975 to 1979	191	118	66	176	17	14	34	67	15	82	780
1980 to 1984	500	154	62	436	5	17	70	104	30	70	1,448
1985 to 1989	410	100	64	597	7	36	45	73	31	117	1,480
1990 to 1994	297	94	39	664	6	62	35	19	50	183	1,449
1995	31	17	21	103	0	24	7	1	7	50	261
1996	53	15	30	96	1	27	10	2	5	36	275
1997	42	13	27	63	3	26	10	1	4	37	226
1998	52	19	15	57	0	27	2	0	7	58	237
1999	23	8	16	45	0	25	4	0	3	46	170
2000	19	5	15	19	0	15	4	0	0	30	107
2001	14	2	5	19	0	16	0	0	0	34	90
2002	7	5	6	14	0	5	2	0	0	19	58
2003	14	8	6	15	0	9	2	0	2	33	89
2004	19	7	9	12	0	10	5	0	2	43	107
2005	20	5	11	23	0	22	3	2	7	24	117
2006	16	4	8	16	2	22	4	2	5	32	111
2007	5	7	6	24	0	19	4	0	0	36	101
2008	5	11	9	13	0	13	2	0	2	33	88
Total	1,721	592	415	2,395	41	389	243	271	170	963	7,200



d. Analysis Chart of Accident Causes over the Years

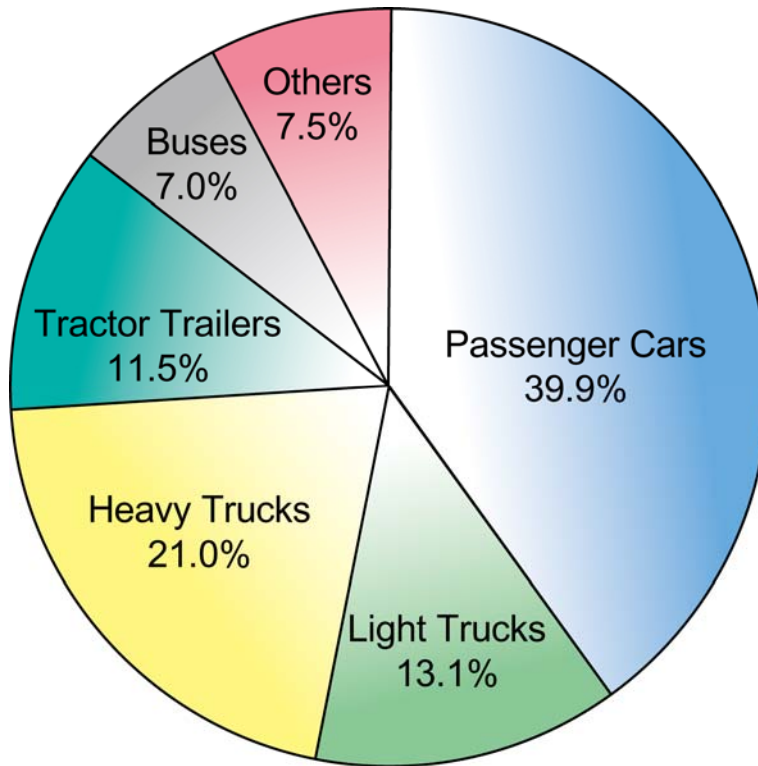


e. Statistics of Types of Vehicles Involved in Accidents over the Years

Year	Passenger Cars	Light Trucks	Heavy Trucks	Tractor Trailers	Buses	Others	Total
1975 to 1979	285	163	240	42	37	13	780
1980 to 1984	540	183	431	132	87	75	1,448
1985 to 1989	513	161	339	156	178	133	1,480
1980 to 1984	620	123	274	164	125	143	1,449
1995	122	27	25	9	47	31	261
1996	130	38	34	41	9	23	275
1997	96	38	26	38	6	22	226
1998	91	37	37	40	11	21	237
1999	75	29	19	24	8	15	170
2000	52	12	4	24	5	10	107
2001	44	7	8	16	4	11	90
2002	18	11	13	7	3	6	58
2003	45	17	10	11	2	4	89
2004	45	14	10	24	9	5	107
2005	54	16	9	23	4	11	117
2006	51	22	13	14	3	8	111
2007	42	23	7	18	4	7	101
2008	46	19	9	8	1	5	88
Total	2,872	940	1,510	830	505	543	7,200



f. Analysis Chart of Types of Vehicles Involved in Accidents over the Years



3) Statistics

(1) 2004-2008 Greenery Land Maintenance Vegetation Quantity and Expense

Year	Greenery Land Area (hectares)	Arbor (thousand)	Shrub (thousand)	Expense (NT\$1,000)
2004	2,285	319	1,319	354,199
2005	2,303	334	1,364	354,199
2006	2,406	346	1,577	364,386
2007	2,442	348	1,673	374,880
2008	2,626	369	1,754	374,880



(2) Prevention and Control Rate of RIFA in Baiting Method

Item	Place	Prevention and Control Rate ^{Note}	Calculation Formula	Prevention and Control Period
1	Tiding Interchange in Freeway No.1	100%	$(1-(0/25)) \times 100\%$ (De-controlled on 7/27/2007)	2005/10/31~ 2007/07/27
2	Headquarters of National Freeway Bureau in Freeway No.1	100%	$(1-(0/5)) \times 100\%$ (De-controlled on 8/6/2008)	2006/02/27~ 97/08/06
3	North-bound station 39.3k to 40.3k in Freeway No.1	100%	$(1-(0/28)) \times 100\%$ (De-controlled on 7/27/2007)	2006/02/27~ 2007/07/27
4	Linkou Interchange in Freeway No.1	96%	$(1-(2/50)) \times 100\%$	2004/11/04~ 97/12/31
5	Taoyuan Interchange in Freeway No.1	94%	$(1-(3/50)) \times 100\%$	2004/08/16~ 97/12/31
6	Airport System Interchange in Freeway No.1	98%	$(1-(4/200)) \times 100\%$	2004/11/02~ 97/12/31
7	Jhongli Service Station in Freeway No.1	100%	$(1-(0/5)) \times 100\%$ (De-controlled on 10/30/2006)	2004/11/03~ 2006/10/30
8	Neili Interchange in Freeway No.1	92%	$(1-(4/50)) \times 100\%$	2004/11/09~ 97/12/31
9	South-bound station 60k on Freeway No.1	98%	$(1-(1/50)) \times 100\%$	2005/11/23~ 97/12/31
10	South-bound station 69k in Freeway No.1	100%	$(1-(0/5)) \times 100\%$ (De-controlled on 10/5/2006)	2005/11/23~ 97/10/05
11	Dayuan Interchange in Freeway No.2	100%	$(1-(0/50)) \times 100\%$ (De-controlled on 10/5/2006)	2004/08/16~ 97/10/05
12	East-west station 0k+000 to 0k+800 in Freeway No.2	100%	$(1-(0/38)) \times 100\%$	2006/02/10~ 97/12/31
13	East-bound station 4k in Freeway No.2	96%	$(1-(5/130)) \times 100\%$	2005/11/23~ 97/12/31
14	Southern Taoyuan Interchange in Freeway No.2	98%	$(1-(4/200)) \times 100\%$	2004/10/01~ 97/12/31
15	Danan Interchange in Freeway No.2	98%	$(1-(1/50)) \times 100\%$	2004/10/08~ 97/12/31
16	East-west Direction station 19k-20.3k in Freeway No.2	100%	$(1-(0/363)) \times 100\%$ (De-controlled on 8/6/2008)	2005/01/24~ 97/08/06
17	North-bound station 50k to 49.8k in Freeway No.3	100%	$(1-(0/50)) \times 100\%$ (De-controlled on 8/7/2006)	2004/10/27~ 2006/08/07
18	North-bound station 52k+430 in Freeway No.3	100%	$(1-(0/50)) \times 100\%$ (De-controlled on 8/7/2006)	2005/07/11~ 2006/08/07
19	North-bound station 56k+200 on Freeway No.3	100%	$(1-(0/50)) \times 100\%$ (De-controlled on 8/7/2006)	2004/10/12~ 2006/08/07
20	South-bound station 48k-49k in Freeway No.3	100%	$(1-(0/50)) \times 100\%$ (De-controlled on 8/7/2006)	2005/07/11~ 2006/08/07
21	South-bound station 55k-57k in Freeway No.3	100%	$(1-(0/50)) \times 100\%$ (De-controlled on 8/7/2006)	2005/07/11~ 2006/08/07
22	South-bound station 65k+450 on Freeway No.3	100%	$(1-(0/5)) \times 100\%$ (De-controlled on 8/7/2006)	2005/07/11~ 2006/08/07
23	Baoshan Interchange in Freeway No.3	100%	$(1-(0/5)) \times 100\%$ (De-controlled on 4/26/2006)	2005/03/24~ 2006/04/26
24	Sihu Service Area in Freeway No.3	100%	$(1-(0/5)) \times 100\%$ (De-controlled on 11/6/2006)	2004/10/05~ 2006/11/06
25	Touchen Interchange in Freeway No.5	100%	$(1-(0/150)) \times 100\%$ (De-controlled on 11/9/2007)	2007/02/14~ 2007/11/09



Note:

1. According to the Department of Agriculture's fire ant detection, assessment and prevention standard procedure. Once case region has been cleared of fire ants and through standard procedure tests, do not find fire ant in the region for the next 6 months (100% prevention rate). The region can then be removed from the Bureau of Animal and Plant Health Inspection and Quarantine and the National Fire Ant Prevention Centre's list of affected areas.
2. Prevention and Control Rate (%) = [1 - (the average number of red fire ants in the trap or bait location after the prevention and control being applied/the average number of red fire ants in the trap or bait location before the prevention and control being applied)] x 100%.

(3) 2004-2007 New Contract Constructions projects Completed

Number	Year	Project Name	Bid Date	Completion date
1	2004	Cooperate with National Freeway No. 1 (NF 1) Hsinchu interchange improvement project to add new industrial park interchange. (NF 1 324B)	2004. 12. 28	2006.10.18
2	2004	NF 1 Zaociao toll station counter renew construction project	2004. 07.13.	2004.12.07.
3	2004	NF 1 southbound 94J+240~358 side drainage ditch construction project	2004.4.16	2004.0.8. 27
4	2004	NF 1 Yuanlin to Kaohsiung expansion section Sinshih and Gangshan toll station weigh facilities construction project (Project 543A)	2004.06.11	2005.09.12
5	2004	NF 1 Yuanlin to Kaohsiung expansion section Yuanlin and Dounan toll station weigh facilities construction project (Project 513A and 523A combined)	2004.07.15	2006.04.09
6	2004	NF 2 continued plan Dajia - Chunghua fog section lighting constructing project	2004.08.19	2005.01.17
7	2005	NF 1 Yuanlin to Kaohsiung expansion section Sinshih and Gangshan toll station counter renew construction project (Project 543D and 561B combined bid)	2005.02..23	2006.02.13
8	2005	NF 1 330k+ -174.891 box rebuild project (NF1 P5562)	2005.01.05	2006.08.28
9	2005	NF 1 Sijhih- Wugu section high rise expansion and traffic control system maintenance improvement project.	2005.12.30	2006.02.25
10	2006	NF 1 Yuanlin and Dounan toll station counter renew construction project (Project 513C and 523C combined bid)	2006.01.17	2006.11.28
11	2006	NF 1 Tainan city region sound resisting walls to accommodate widening roads (Project 553C)	2006.09.28	2007.07.24
12	2006	NF 1 Yuanlin to Kaohsiung expansion section project 44, modification to overhead bridges project.	2006.10.26	2007.09.29
13	2006	NF 1 Yuanlin to Kaohsiung expansion section expansions to Yuanlin -Dalin Section emergency project. (Project 521F)	2006.11.23	2007.02.10



14	2006	NF 1 Yuanlin to Kaohsiung expansion section expansions to Yuanlin –Dalin Section emergency project. (Project 521H)	2006.11.23	2007.03.30
15	2006	NF 1 Yuanlin to Kaohsiung expansion section expansions to Yuanlin –Dalin Section emergency project. (Project 521I)	2006.11.23	2007.03.31
16	2006	NF 1 Yuanlin to Kaohsiung expansion section expansions to Yuanlin –Dalin Section emergency project. (Project 521J)	2006.11.23	2007.02.10
17	2006	NF 1 Yuanlin to Kaohsiung expansion section Yuanlin and Beidou interchange third lane, speed bump removal and signal lines project	2006.12.19	2007.02.10
18	2006	High speed rail Chiayi Taibao station outer connecting route extension to provincial highway No. 1 bid number 3.	2006.03.13	2007.11.06
19	2006	NF 1 Yuanlin to Kaohsiung expansion project Dalin- Sinying section emergency works (Project P5311)	2006.11.23	2007.03.30
20	2006	NF 1 Yuanlin to Kaohsiung expansion project Dalin- Sinying section emergency works (Project P5312)	2006.11.23	2007.03.28
21	2006	NF 1 Yuanlin to Kaohsiung expansion project Dalin- Sinying section emergency works (Project P5313)	2006.11.23	2007.03.28
22	2006	Chaiyi system interchange road AC project	2006.11.23	2007.01.23
23	2006	NF 1 Wugu intersection improvement project	2006.02.21	2010.06.24
24	2006	NF 1 Yuanlin Kaoshiung traffic control system project.	2006.02.10	2008.12.29
25	2006	NF Bridge seismic assessment and retrofit project (Part 1 Project M11)	2006.12.08	2009.10.10
26	2006	NF 1 Yuanlin to Kaohsiung expansion section expansions to Yuanlin –Dalin Section emergency project. (Project 521G)	2006.11.23	2007.03.30
27	2006	NF 1 new Hsinchu industrial park interchange project (Project 564A and 564C combined).	2006.11.22	2009.01.12
28	2007	NF 1 214k+700 and 215k+056 sections widening as well as 215k+410 box flooding improvement project.	2007.02.07	2007.12.07
29	2007	NF 1 Yuanlin to Kaohsiung expansion section Northbound 232k+050~232k+890 farmland drainage improvement project.	2007.05.17	2007.09.26
30	2007	NF 1 from 240k south farm land drainage rebuilding project (Project 521Q)	2007.05.23	2007.10.23
31	2007	NF Bridge seismic assessment and retrofit project (Part 1 Project M15A)	2007.07.12	2009.10.22
32	2007	NF Bridge seismic assessment and retrofit project (Part 1 Project M15C)	2007.07.12	2009.02.27
33	2007	NF Bridge seismic assessment and retrofit project (Part 1 Project M15B)	2007.06.21	2009.01.15



34	2007	Keelung City connection to NF 1 Bridge seismic assessment and retrofit project (Part 1 Project M13A)	2007.08.14	2009.10.24
35	2007	Keelung City connection to NF 1 Bridge seismic assessment and retrofit project (Project M13C)	2007.09.27	2009.02.11
36	2007	NF 1 Yuanlin to Kaohsiung expansion section expansions to Yuanlin–Dalin Section Project 521 follow up A project.	2007.07.16	2008.06.15
37	2007	NF 1 Yuanlin to Kaohsiung expansion section expansions to Yuanlin–Dalin Section Project 521 follow up B project.	2007.06.27	2008.06.19
38	2007	NF 1 Yuanlin to Kaohsiung expansion section expansions to Yuanlin–Dalin Section Project 521 follow up C project.	2007.06.27	2008.06.13
39	2007	NF 1 Yuanlin to Kaohsiung expansion section expansions to Yuanlin –Dalin Section Project 531 follow up A project.	2007.06.22	2008.06.24
40	2007	NF 1 Yuanlin to Kaohsiung expansion section expansions to Yuanlin–Dalin Section Project 531 follow up B project.	2007.07.24	2008.05.30
41	2007	NF 1 Yuanlin to Kaohsiung expansion section expansions to Yuanlin–Dalin Section Project 531 follow up C project.	2007.06.23	2008.06.29
42	2007	NF Bridge seismic assessment and retrofit project (Part 1 Project M12)	2007.07.04	2009.11.27
43	2007	NF (opened section) Bridge seismic assessment and retrofit project (Part 1 Project M14)	2007.07.31	2009.11.27
44	2007	NF 1 Yuanlin to Kaohsiung expansion section Dingjin System Interchange right turn access high rise road to provincial highway No. 10 project (Project 571A)	2007.07.13	2009.02.27
45	2007	NF 1 Shueishang interchange connection project (Project 5316).	2007.10.08	2008.10.30
46	2007	New construction of the East- West expressway Wanli-Ruibin Dahua system interchange. (NF 1 156)	2007.10.17	2010.1.14
47	2007	NF 1 Yuanlin to Kaohsiung expansion Chongsha Bridge expansion and submerged weir repair project (Project P5122)	2007.05.01	2008.01.02
48	2007	NF 1 Silou area farm road surface improvement and drainage project. (Project P512N).	2007.06.21	2007.10.30
49	2007	NF 1 Yuanlin to Kaohsiung expansion section expansions to Yuanlin –Dalin Section (Project 521k).	2007.07.13	2008.02.05
50	2007	NF 1 from 240k north farm land drainage rebuilding project (Project P521V).	2007.08.15	2008.07.17
51	2008	NF 1 Chiayi interchange connecting route project (Project 5315).	2008.01.10	2008.12.12
52	2008	NF Bridge seismic assessment and retrofit project (Part 1) Project M12A Tamsui river Sanchong area coast land clearing project.	2008.05.20	2009.06.28



53	2008	Tainan Fuhua and Fuguo area drainage improvement project	2008.01.08	2008.10.30
54	2008	NF 1 Yuanlin–Dalin Section 213k+700~214k+200 drainage improvement project (Project P5111).	2008.01.02	2008.06.24
55	2008	NF 1 drainage ditch and Shelin Village regional drainage improvement project.	2008.05.14	2008.10.30
56	2008	Keelung West coast access route bridge seismic assessment and retrofit project (Project M33B).	2008.10.02	2009.11.11
57	2008	NF 1 southbound 365k+800~366k+300 Eastern Kirin Building noise prevention trial projects.	2008.04.01	2008.12.19
58	2008	NF 1 Yuanlin to Kaohsiung expansion section Yuanlin–Dalin Section repair project (Project P511I).	2008.05.07	2008.10.17
59	2008	NF 1 362k+600~363k+800 road side slope reinforcement project.	2008.08.13	2008.12.15
60	2008	Vehicle counter circuit repair project	2008.08.28	2008.11.29
61	2008	Central region automatic license plate recognition system repair.	2008.10.08	2009.02.25
62	2008	NF 1 N252k+000~256k+800, N268k+000~269k+300 emergency surface repairs.	2008.08.27	2008.09.30