



2 Administrations

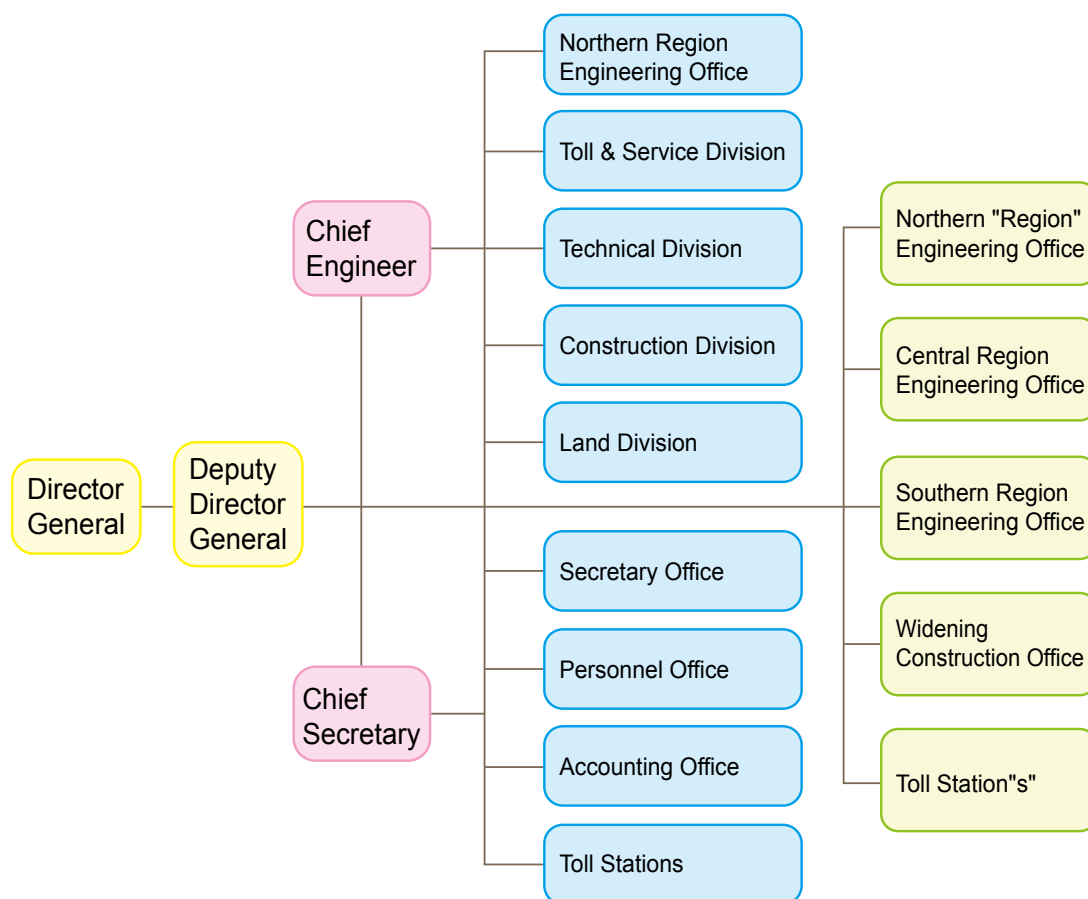
1. History and Responsibilities

This Bureau was established on June, 8, 1970 with the name: the Freeway Construction Bureau, which was responsible for Freeway construction. On October 31, 1978, Freeway No. 1 (Sun Yat-Sen Freeway) was completed with the entire line opened for traffic. After the completion of said project, this Bureau was renamed as Taiwan Area National Freeway Bureau (TANFB) on December 1, 1978 for handling the following items:

- (1) Maintenance and widening of the freeways.
- (2) Traffic management and safety maintenance of the freeways.
- (3) Levying project beneficial charge on vehicles traveling on the freeways.
- (4) Roadside facilities operation and management along the freeways.
- (5) Environment arrangement and maintenance along the freeways.
- (6) Preparation, preservation and implementation of land, houses and other assets as well as property treatment for the freeways.
- (7) Research and development of the freeway and other relevant matters.



2.Organization Chart



3.Current Staffing

Category \ Unit		Headquarter	Northern Region Eng. Office	Central Region Eng. Office	Southern Region Eng. Office	Widening Construction Office	Toll Station	Total
Employee	Technique	122	116	117	108	67	32	562
	Business	103	37	34	47	25	129	375
Workers, Technicians and Maintenance workers		9	10	8	6	26	22	81
Temporary Personnel	Employee	10	15	5	1	0	0	31
	Contracted Employee	0	47	33	22	0	1,053	1,155
	Contracted worker	0	120	77	61	0	0	258
Subtotal		244	345	274	245	118	1,236	2,462

Date of Information: End of Dec. 2011



4. National Freeway Construction & Management Fund

2011 Annual Budget Balance Sheet and Budget Execution Status

(1) Balance Sheet

Unit: NT\$ 1,000

Assets	Amount	Liabilities and Net Worth	Amount
Title/Name		Title/Name	
Assets	880,322,175	Liabilities	227,594,816
1) Current Assets	5,639,142	1) Current Liabilities	75,818,541
(1) Cash	4,090,027	(1) Short-term Liabilities	60,300,000
(2) Accounts Receivable	340,315	(2) Accounts Payable	15,206,606
(3) Inventory	75,478	(3) Unearned receipts	311,935
(4) Prepayments	1,133,322	2) Long-term Liabilities	145,883,575
(5) Short-term advance payment	0	(1) Long-term Liabilities	145,883,575
2) Investments, Long-term accounts receivables, advance payment and reserves	246,381	3) Other Liabilities	5,892,700
(1) Long-term advances payment	0	(1) Miscellaneous liabilities	5,892,700
(2) Reserve Fund	246,381	(2) Inter Current accounts	0
3) Fixed Assets	859,454,157	Net Worth	652,727,359
(1) Land	238,723,833	1) Funds	590,855,549
(2) Land improvements	304,414,805	(1) Funds	590,855,549
(3) Houses and buildings	11,282,973	2) Surplus Reserves	1,409,761
(4) Machinery and equipment	4,486,273	(1) Capital reserve	1,409,761
(5) Traffic and transportation equipments	48,024,796	(2) Special reserve	0
(6) Miscellaneous equipment	696,611	3) Accumulated Surplus and deficits (-)	16,312,626
(7) Fixed assets in process	251,824,866	(1) Accumulated surplus	16,312,626
4) Intangible Assets	57,744	4) Net worth of other Items	44,149,423
(1) Intangible assets	57,744	(1) Unrealized revaluation increment	44,149,423
5) Other Assets	14,924,751		
(1) Non-operating assets	84,238		
(2) Miscellaneous assets	14,840,513		
(3) Inter current accounts	0		
Total	880,322,175	Total	880,322,175



(2) Budget Execution Status

1. Operating Revenue and Expenses execution Status

Unit: NT\$ 1,000

Item	Annual Budget Amount	Annual Final Accounts Amount
Agency revenue	32,770,258	33,541,149
1) Service Revenue	22,525,771	23,314,793
(1) Providing services	714,116	699,183
(2) Toll revenue	21,811,655	22,615,610
2) Other Agency Revenue	10,244,487	10,226,356
(1) Fuel income	10,153,818	10,116,079
(2) Miscellaneous agency revenue	90,669	110,277
Agency cost and expense	7,574,838	8,526,134
1) Service Cost	6,241,128	7,247,991
(1) Maintenance cost	3,423,662	4,183,879
(2) Management cost	2,817,466	3,064,112
(3) Other service cost	-	-
2) General and administrative expenses	1,333,710	1,278,143
Agency Surplus	25,195,420	25,015,015
Non-operating revenue	560,762	627,723
Non-operating expense	8,449,200	8,431,332
Non-operating Surplus	-7,888,438	-7,803,609
Gurplus of this term	17,306,982	17,211,406

2. Capital Expenditures Project Execution Status

Unit: NT\$ 1,000

	This year's available budget	Accumulated budget executed in this fiscal year (including retained budget for the next fiscal year)
1. Project based capital expenditure	34,685,763	34,147,451
2. General and equipment capital expenditures construction	1,647,450	1,646,412
Total	36,333,213	35,793,863