

11



Statistic Annual Report



1.TANFB 2007 ~ 2011 Staffing Table

Year	Unit	Category	Headquarter	Northern Region Eng. Office	Central Region Eng. Office	Southern Region Eng. Office	Widening Construction Office	Toll Station	Total
2007	Employee	Technique	125	144	134	136	67	45	651
		Business	108	47	39	50	29	169	442
	Workers, Technicians, and Maintenance worker		9	10	7	6	26	26	84
	Temporary Personnel	Employee	10	15	2	1	0	0	28
		Contracted Employee	0	63	24	24	0	1,052	1,163
		Contracted worker	0	173	79	66	0	0	318
	Subtotal		252	452	285	283	122	1,292	2,686
2008	Employee	Technique	125	138	133	123	69	44	632
		Business	106	44	39	51	25	159	424
	Workers, Technicians, and Maintenance worker		9	10	8	6	26	26	85
	Temporary Personnel	Employee	10	15	2	1	0	0	28
		Contracted Employee	0	62	24	22	0	1,050	1,158
		Contracted worker	0	173	78	65	0	0	316
	Subtotal		250	442	284	268	120	1,279	2,643
2009	Employee	Technique	126	130	131	123	67	40	617
		Business	106	46	38	51	26	150	417
	Workers, Technicians, and Maintenance worker		9	10	8	6	26	25	84
	Temporary Personnel	Employee	9	15	5	1	0	0	30
		Contracted Employee	0	63	31	22	0	1,046	1,162
		Contracted worker	0	172	78	64	0	0	314
	Subtotal		250	436	291	267	119	1,261	2,624
2010	Employee	Technique	118	127	126	111	49	38	569
		Business	106	43	40	52	45	139	425
	Workers, Technicians, and Maintenance worker		9	10	8	6	26	25	84
	Temporary Personnel	Employee	10	14	5	1	0	0	30
		Contracted Employee	0	63	33	22	0	1,046	1,164
		Contracted worker	0	168	77	63	0	0	308
	Subtotal		243	425	289	255	120	1,248	2,580



Year	Unit	Category	Headquarter	Northern Region Eng. Office	Central Region Eng. Office	Southern Region Eng. Office	Widening Construction Office	Toll Station	Total
2011	Employee	Technique	122	116	117	108	67	32	562
		Business	103	37	34	47	25	129	375
	Workers, Technicians, and Maintenance worker		9	10	8	6	26	22	81
	Temporary Personnel	Employee	10	15	5	1	0	0	31
		Contracted Employee	0	47	33	22	0	1,053	1,155
		Contracted worker	0	120	77	61	0	0	258
	Subtotal		244	345	274	245	118	1,236	2,462

2.National Freeway Construction & Management Fund

(1).2007 ~ 2011 Budget Balance Sheet

Balance Sheet

Unit: NT\$ 1,000

	2007	2008	2,009	2,010	2,011
Assets	759,457,558	787,515,096	820,304,839	852,761,601	880,322,175
1.Current assets	4,148,817	3,845,819	6,358,661	4,833,052	5,639,142
2.Investments, long-term account receivables, Advance Payments and Reserves	218,029	196,680	211,487	226,949	246,381
3.Fixed assets	739,614,827	768,212,636	797,087,824	831,950,378	859,454,157
4.Intangible assets	33,925	35,800	56,983	59,229	57,744
5.Other assets	15,441,960	15,224,161	16,589,884	15,691,993	14,924,751
Total	759,457,558	787,515,096	820,304,839	852,761,601	880,322,175
Liabilities	209,645,476	215,641,410	219,735,460	217,402,169	227,594,816
1.Current liabilities	32,534,496	38,806,688	52,722,280	65,460,472	75,818,541
2.Long-term liabilities	170,976,773	171,018,944	161,061,114	146,103,286	145,883,575
3.Other liabilities	6,134,207	5,815,778	5,952,066	5,838,411	5,892,700
Net value	549,812,082	571,873,686	600,569,379	635,359,432	652,727,359
1.Funds	465,188,643	491,204,610	520,887,758	575,083,793	590,855,549
2.Surplus Reserves	21,146,244	17,744,332	20,028,965	1,407,671	1,409,761
3.Accumulated surplus	29,327,485	28,775,034	25,502,946	14,710,097	16,312,626
4.Net value of other items	34,149,710	34,149,710	34,149,710	44,157,871	44,149,423
Total	759,457,558	787,515,096	820,304,839	852,761,601	880,322,175



(2).2007~2008 Budget Execution Status

1.Operating Revenue and Expenses Execution Status

Unit: NT\$ 1,000

Year	2,007		2,008	
Item	Budget Amount	Final Accounts Amount	Budget Amount	Final Accounts Amount
Agency Revenue	36,168,775	33,310,427	36,349,984	31,735,796
1. Service revenue	25,740,835	23,322,032	25,784,223	21,829,707
2. Other Agency Revenue	10,427,940	9,988,395	10,565,761	9,906,089
Agency cost and expense	6,564,810	6,645,898	7,041,539	7,008,314
1. Service Cost	5,404,771	5,474,991	5,862,023	5,806,863
2. General and Administrative Expense	1,160,039	1,170,907	1,179,516	1,201,451
Agency Surplus	29,603,965	26,664,529	29,308,445	24,727,482
Non-operating revenue	662,832	989,094	664,663	996,806
Non-operating expense	9,822,555	10,386,237	9,482,945	9,735,131
Non-operating Surplus	-9,159,723	-9,397,143	-8,818,282	-8,738,325
Surplus of this Period	20,444,242	17,267,386	20,490,163	15,989,157

2.Capital Expenditures Project Execution Status

Unit: NT\$ 1,000

Year	2,007		2,008	
Item	This year's available budget	Accumulated budget executed in this fiscal year (including retained budget for the next fiscal year)	This year's available budget	Accumulated budget executed in this fiscal year (including retained budget for the next fiscal year)
1. Project-based capital expenditure	32,976,604	32,199,972	32,214,016	32,213,093
2. General construction and Equipment Capital Expenditures	462,850	462,226	412,393	363,019
Total	33,439,454	32,662,198	32,626,409	32,576,112



(3).2009~2011 Budget Execution Status

1.Operating Revenue and Expenses Execution Status

Unit: NT\$ 1,000

Year	2,009		2,010		2,011	
Item	Budget Amount	Final Accounts Amount	Budget Amount	Final Accounts Amount	Budget Amount	Final Accounts Amount
Agency revenue	33,834,824	31,354,342	33,061,039	32,833,091	32,770,258	33,541,149
1.Service revenue	23,612,195	21,555,786	22,814,205	22,721,580	22,525,771	23,314,793
2.Other Revenue	10,222,629	9,798,556	10,246,834	10,111,511	10,244,487	10,226,356
Agency cost and expense	7,326,435	7,470,914	7,121,957	8,034,238	7,574,838	8,526,134
1.Service cost	6,060,823	6,272,061	5,859,177	6,634,206	6,241,128	7,247,991
2.General and administrative expenses	1,265,612	1,198,853	1,262,780	1,400,032	1,333,710	1,278,143
Business balance	26,508,389	23,883,428	25,939,082	24,798,853	25,195,420	25,015,015
Non-operating revenue	653,627	590,029	614,759	565,511	560,762	627,723
Non-operating expense	9,249,801	9,115,690	8,223,655	8,096,976	8,449,200	8,431,332
Non-operating Surplus	-8,596,174	-8,525,661	-7,608,896	-7,531,465	-7,888,438	-7,803,609
Surplus of this Period	17,912,215	15,357,767	18,330,186	17,267,388	17,306,982	17,211,406

2.Capital Expenditures Project execution Status

Unit: NT\$ 1,000

Year	2,009		2,010		2,011	
Item	This year's available budget	Accumulated budget executed in this fiscal year (including retained budget for the next fiscal year)	This year's available budget	Accumulated budget executed in this fiscal year (including retained budget for the next fiscal year)	This year's available budget	Accumulated budget executed in this fiscal year (including retained budget for the next fiscal year)
1.Project-based capital expenditure	30,482,447	30,094,902	34,525,407	28,723,722	34,685,763	34,147,451
(2)General Construction and Equipment Capital Expenditures	1,196,310	1,160,407	1,226,018	1,221,226	1,647,450	1,646,412
Total	31,678,757	31,255,309	35,751,425	29,944,948	36,333,213	35,793,863



3. Traffic Conditions

(1). Historic Traffic Volume

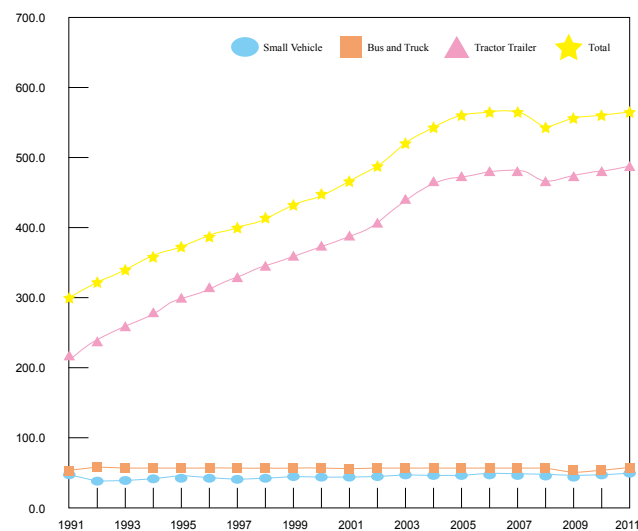
1. Historic toll station traffic volume

Unit: million vehicles

Year	Small Vehicle	Bus and Truck	Tractor Trailer	Total	Annual Growth Rate	Million Vehicles - Kilometer (MVK)
1975-1979	88.0	35.7	17.1	140.9	—	5,509.2
1980~1984	347.8	117.6	77.6	543.0	—	21,025.7
1985~1989	689.0	148.1	133.6	970.7	—	38,789.8
1990	218.3	34.8	32.5	285.7	—	11,539.0
1991	226.2	35.9	33.6	295.6	3.48%	11,891.9
1992	230.0	49.1	23.2	302.3	2.26%	12,236.3
1993	245.6	49.4	27.2	322.1	6.55%	12,685.0
1994	269.8	50.0	30.9	350.7	8.87%	13,730.9
1995	287.1	50.1	31.0	368.2	4.98%	14,450.0
1996	298.5	51.9	30.5	380.9	3.46%	14,829.9
1997	313.5	50.1	32.7	396.3	4.05%	15,343.8
1998	331.6	50.1	32.6	414.2	4.52%	15,703.4
1999	346.8	53.0	34.2	434.0	4.76%	16,371.7
2000	365.3	54.3	34.2	453.8	4.57%	19,973.4
2001	375.8	55.3	33.6	464.7	2.40%	21,571.7
2002	395.7	55.8	34.4	485.9	4.56%	22,670.8
2003	435.6	54.1	35.0	524.7	7.99%	23,872.7
2004	467.9	57.3	38.0	563.2	7.33%	25,678.6
2005	479.1	56.5	38.2	573.8	1.89%	26,050.9
2006	480.6	55.2	38.9	574.7	0.16%	26,235.3
2007	475.5	54.3	39.8	569.6	-0.88%	25,950.0
2008	453.9	50.3	39.3	543.5	-4.58%	24,649.9
2009	457.1	48.6	33.9	539.6	-0.73%	26,488.0
2010	464.8	51.8	38.4	555.1	0.0287	27,580.5
2011	487.0	53.4	39.5	579.9	0.0447	28,526.2
Total	9,230.7	1,422.8	979.7	11,633.1	—	503,354.3

2. Historic annual traffic volume growth chart

Million Vehicles





(2).Analysis of Traffic Accidents

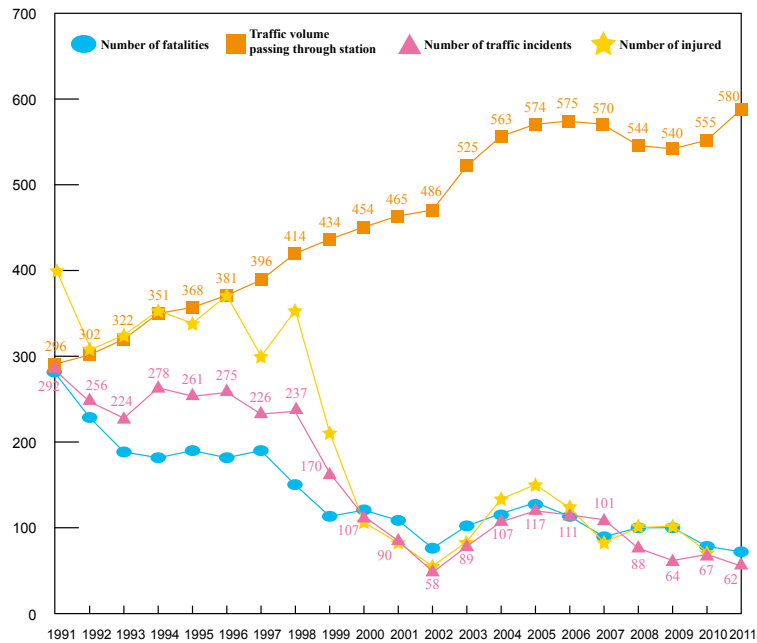
1.Historic A1 traffic accidents statistical table

Year	Million Vehicles Kilometer (MVK)	Through toll station traffic volume (million vehicles)	No. of Accidents (events)	Accident Rate (event/MVK)	Fatality (person)	Fatality Rate (person/MVK)	Injury (person)	Injury Rate (person/MVK)
1975-1979	5,509.2	140.9	780	0.1416	305	0.0554	1,743	0.3164
1980~1984	21,025.7	543.0	1,448	0.0689	674	0.0321	2,801	0.1332
1985~1989	38,789.8	970.7	1,480	0.0382	838	0.0216	2,580	0.0665
1990	11,539.0	285.7	405	0.0351	359	0.0311	642	0.0556
1991	11,891.9	295.6	292	0.0246	251	0.0211	413	0.0347
1992	12,236.3	302.3	256	0.0209	223	0.0182	343	0.0280
1993	12,685.0	322.1	224	0.0177	187	0.0147	322	0.0254
1994	13,730.9	350.7	278	0.0202	184	0.0134	365	0.0266
1995	14,450.0	368.2	261	0.0181	192	0.0133	338	0.0234
1996	14,829.9	380.9	275	0.0185	183	0.0123	379	0.0256
1997	15,343.8	396.3	226	0.0147	189	0.0123	302	0.0197
1998	15,703.4	414.2	237	0.0151	160	0.0102	369	0.0235
1999	16,371.7	434.0	170	0.0104	126	0.0077	211	0.0129
2000	19,973.4	453.8	107	0.0054	128	0.0064	94	0.0047
2001	21,571.7	464.7	90	0.0042	112	0.0052	82	0.0038
2002	22,670.8	485.9	58	0.0026	71	0.0031	68	0.0030
2003	23,872.7	524.7	89	0.0037	107	0.0045	80	0.0034
2004	25,678.6	563.2	107	0.0042	124	0.0048	133	0.0052
2005	26,050.9	573.8	117	0.0045	129	0.0050	154	0.0059
2006	26,235.3	574.7	111	0.0042	135	0.0051	114	0.0043
2007	25,950.0	569.6	101	0.0039	112	0.0043	86	0.0033
2008	24,649.9	543.5	88	0.0036	98	0.0040	104	0.0042
2009	26,488.0	539.6	64	0.0024	82	0.0031	102	0.0039
2010	27,580.5	555.1	67	0.0024	74	0.0027	75	0.0027
2011	28,526.2	579.9	62	0.0022	72	0.0026	47	0.0017
Total (average)	503,354.6	11,633.1	7393	0.0132	5115	0.0085	11947	0.0226



2. Historic traffic volume growth and accident rate chart

Million Vehicles

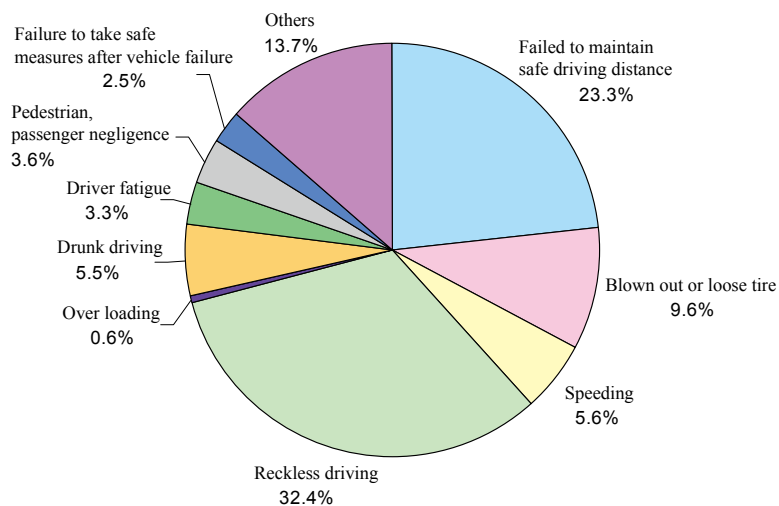


3. Historic accident causes statistics table

Year	Tail Gating	Defective Tire or wheel off	Speeding	Improper driving	Improper loading	Intoxicated driving	Fatigue	Pedestrian, Passenger Faults	Failure to take safe measures after vehicle failure.	Others	Total
1975-1979	191	118	66	176	17	14	34	67	15	82	790
1980~1984	500	154	62	436	5	17	70	104	30	70	1448
1985~1989	410	100	64	597	7	36	45	73	31	117	1480
1990~1994	300	94	39	667	6	62	35	19	50	183	1455
1995	31	17	21	103	0	24	7	1	7	50	261
1996	53	15	30	86	1	27	10	2	5	36	275
1997	42	13	27	63	3	26	10	1	4	37	226
1998	52	19	15	57	0	27	2	0	7	58	237
1999	23	8	16	45	0	25	4	0	3	46	170
2000	19	5	15	19	0	15	4	0	0	30	107
2001	14	2	5	19	0	16	0	0	0	34	90
2002	7	5	6	14	0	5	2	0	0	19	58
2003	14	8	6	15	0	9	2	0	2	33	89
2004	19	7	9	12	0	10	5	0	2	43	107
2005	20	5	11	23	0	22	3	2	7	24	117
2006	16	4	8	16	2	22	4	2	5	32	111
2007	5	7	6	24	0	19	4	0	0	36	101
2008	5	111	9	13	0	13	2	0	2	33	88
2009	8	8	1	12	0	9	0	0	3	23	64
2010	8	9	2	9	0	10	1	0	5	23	67
2011	4	6	4	18	1	5	1	1	6	16	62
Grand Total	1,741	715	422	2,424	42	413	245	272	184	1,025	7,403



4. Historic accident causes analysis chart

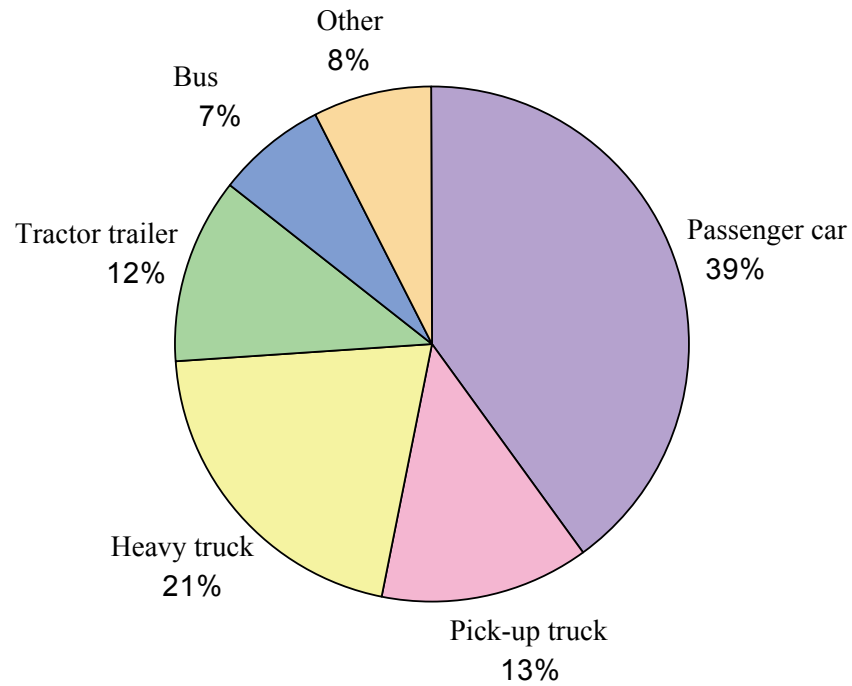


5. Historic vehicle types involved in accident

Year	Passenger Car(vehicle)	Light Truck (vehicle)	Heavy Truck (vehicle)	Tractor Trailer (vehicle)	Bus (vehicle)	Others (vehicle)	Total (vehicle)
1975-1979	285	163	240	42	37	13	780
1980~1984	540	183	431	132	87	75	1,448
1985~1989	513	161	339	156	178	133	1,480
1990~1994	623	123	276	165	125	142	1,455
1995	122	27	25	47	9	31	261
1996	130	38	34	41	9	23	275
1997	96	38	26	38	6	22	223
1998	91	37	37	40	11	21	237
1999	75	29	19	24	8	15	170
2000	52	12	4	24	5	10	107
2001	44	7	8	16	4	11	90
2002	18	11	13	7	3	6	58
2003	45	17	10	11	2	4	89
2004	45	14	10	24	9	5	107
2005	54	16	9	23	4	11	117
2006	51	22	13	14	3	8	111
2007	42	23	7	18	4	7	101
2008	46	19	9	8	1	5	88
2009	30	14	5	7	3	5	64
2010	25	14	3	17	1	7	67
2011	30	5	7	12	1	7	62
Grand Total	2,957	973	1,525	866	510	561	7,390



6. Historic traffic incident vehicle type analysis chart



4. Public works statistics

(1). 2007~2011 number of plants planted and maintained

Year	Grassland Area (hectare)	Tree (1,000)	Shrub (1,000)
2007	2,442	348	1,673
2008	2,626	369	1,892
2009	2,646	378	2,071
2010	2,692	443	2,433
2011	2,692	494	2,791



(2).2011 red imported fire ant invasion monitoring and prevention situation

Revised date: Dec. 13, 2011

Item	Location	Monitoring results (Note 1)	Level	Prevention Period
1	Tiding Interchange, National Freeway No. 1	Traps with no catch	Level 0 (no occurrence area)	2005/10/31~2007/7/27 (2007/7/27 release control)
2	Headquarter of Taiwan Area National Freeway Bureau, National Freeway No. 1	Traps with no catch	Level 0 (no occurrence area)	2006/2/27~2008/8/6 (2008/8/6 release control)
3	National Freeway No. 1 Northbound 39.3k~40.3k	Traps with no catch	Level 0 (no occurrence area)	2006/2/27~2007/7/27 (2007/7/27 release control)
4	Linkou Interchange (Note 2), National Freeway No. 1	Traps with no catch	Level 0 (no occurrence area)	2004/11/4~2009/12/9 (2009/12/9 release control)
5	Taoyuan Interchange (Note 2), National Freeway No. 1	Traps with no catch	Level 0 (no occurrence area)	2004/8/16~100/2/8 (100/2/8 release control)
6	Northbound 49k~55k (Note 2), National Freeway No. 1	Traps with no catch	Level 0 (no occurrence area)	2010/7/6~100/2/8 (100/2/8 release control)
7	Southbound 52k~60k (Note 2), National Freeway No. 1	Traps with no catch	Level 0 (no occurrence area)	2010/7/6~2010/10/31
8	Northbound 60k~70k (Note 2), National Freeway No. 1	Traps with no catch	Level 0 (no occurrence area)	2009/12/30~100/1/4 (100/1/4 release control)
9	System Interchange, National Freeway No. 1	Between 5 – 50	Level 0 (no occurrence area)	2004/11/02~100/11/30
10	Zhongli Service Area, National Freeway No.1	Traps with no catch	Level 0 (no occurrence area)	2009/12/4~100/11/30
11	Neili Interchange (Note 2), National Freeway No.1	Traps with no catch	Level 0 (no occurrence area)	2004/11/9~2010/10/31
12	Southbound 60k, National Freeway No. 1	Traps with no catch	Level 0 (no occurrence area)	2005/11/23~2009/9/23 (2009/9/23 release control)
13	Southbound 69k, National Freeway No. 1	Traps with no catch	Level 0 (no occurrence area)	2005/11/23~2008/10/5 (2006/10/5 release control)
14	Dayuan Interchange, National Freeway No. 2	Traps with no catch	Level 0 (no occurrence area)	2004/8/16~2008/10/5 (2006/10/5 release control)
15	Eastbound 0k+200~0k+800, National Freeway No. 2	Traps with no catch	Level 0 (no occurrence area)	2006/2/10~2009/1/17 (2009/1/17 release control)
16	Eastbound 4k, National Freeway No. 2	Between 5 – 50	Level 2 (mild occurrence area)	2005/11/23~100/11/30
17	Nantaoyuan Interchange, National Freeway No. 2	Between 5 – 50	Level 2 (mild occurrence area)	2004/10/01~100/11/30
18	Danan Interchange, National Freeway No. 2	Traps with no catch	Level 0 (no occurrence area)	2004/10/08~2008/12/23 (2008/12/23 release control)
19	National Freeway No. 2, East-west 19k~20.3k	Traps with no catch	Level 0 (no occurrence area)	2005/1/24~2008/8/6 (2008/8/6 release control)
20	Northbound 50k~49.8k,	Traps with no catch	Level 0 (no occurrence area)	2004/10/27~2006/8/7 (2006/8/7 release control)
21	National Freeway No. 3	Traps with no catch	Level 0 (no occurrence area)	100/2/23~100/11/30
22	Left side of the Northbound Entry ramp, Sanying Interchange, National Freeway No. 3	Traps with no catch	Level 0 (no occurrence area)	2005/7/11~2006/8/7 (2006/8/7 release control)
23	National Freeway No. 3, Northbound 52k+430,	Traps with no catch	Level 0 (no occurrence area)	2004/10/12~2006/8/7 (2006/8/7 release control)



Item	Location	Monitoring results (Note 1)	Level	Prevention Period
24	Northbound 67k+400, National Freeway No. 3	Traps with no catch	Level 0 (no occurrence area)	100/2/23~100/11/30
25	Southbound 48k~49k, National Freeway No. 3	Traps with no catch	Level 0 (no occurrence area)	2005/7/11~2006/8/7 (2006/8/7 release control)
26	Southbound 55k~57k, National Freeway No. 3	Traps with no catch	Level 0 (no occurrence area)	2005/7/11~2006/8/7 (2006/8/7 release control)
27	Southbound 62k+400, National Freeway No. 3	Traps with no catch	Level 0 (no occurrence area)	100/2/23~100/11/30
28	Southbound 65k+400, National Freeway No. 3	Traps with no catch	Level 0 (no occurrence area)	100/2/23~100/11/30
29	Southbound 65k+450, National Freeway No. 3	Traps with no catch	Level 0 (no occurrence area)	2005/7/11~2006/8/7 (2006/8/7 release control)
30	Baoshan Interchange, National Freeway No. 3	Traps with no catch	Level 0 (no occurrence area)	2005/3/24~2006/4/26 (2006/4/26 release control)
31	Xihu Service Area, National Highway No. 3	Traps with no catch	Level 0 (no occurrence area)	2004/10/5~2006/11/6 (2006/11/6 release control)
32	Toucheng Interchange access road, National Highway No. 5	Traps with no catch	Level 0 (no occurrence area)	2007/2/14~2007/11/9 (2007/11/9 release control)

Note:

a).Monitoring results (in accordance with the classification level in the red imported fire ants standard operating procedures, May 2011 version):

Level 4: Severe occurrence area, average number of red imported fire ants caught or lured per trap/bait station is greater than 200;

Level 3: Moderate occurrence area, average number of red imported fire ants caught or lured per trap/bait station is between 50 to 200;

Level 2: Mild occurrence area, average number of red imported fire ants caught or lured per trap/bait station is between 5 to 50;

Level 1: Initial occurrence area, average number of red imported fire ants caught or lured per trap/bait station is less than 5;

Level 0: No occurrence area, no red imported fire ants caught or lured.

b).Since January 1, 2010, the National Freeway No. 1 Linkou Interchange, Taoyuan Interchange, northbound 49 k~ 55k southbound 52k ~ 60k, northbound 60k ~ 70k and Neili Interchange have been transferred to the National Highway Engineering Bureau.

(3).Table of new widening project works made within 2007~2011

No.	Year	Project Name	Bid-awarded date	Work-completed date
1	2007	Sun Yat-sen Freeway widening, 214k+700, 215k+056 & 215k+410 box culvert stagnant water improvement project	20070207	20071207
2	2007	Sun Yat-sen Freeway Yuanlin-to-Kaohsiung northbound widening, 232k+050~232k+890 farmland drainage farmland drainage.	20070517	20070926
3	2007	National Freeway No. 1 Bid 521 sta. 240k southern agricultural road and drainage restoration project (Bid P521Q)	20070523	20071023
4	2007	National Freeways bridges seismic assessment and retrofit project (Phase 1) Bid M15A.	20070712	20091022



No.	Year	Project Name	Bid-awarded date	Work-completed date
5	2007	National Freeways bridges seismic assessment and retrofit project (Phase 1) Bid M15C.	20070712	20090227
6	2007	National Freeways bridges seismic assessment and retrofit project (Phase 1) Bid M15B.	20070621	20090115
7	2007	National Freeways bridges seismic assessment and retrofit project (Phase 1) Bid M13A.	20070814	20091024
8	2007	Keelung City connecting to National Freeway No.1 bridges seismic assessment and retrofit project (Phase 1) Bid M13C.	20070927	20090211
9	2007	Sun Yat-sen Freeway Yuanlin-to-Kaohsiung widening project, Yuanlin Dalin End Bid 521 subsequent Bid A project.	20070716	20080615
10	2007	Sun Yat-sen Freeway Yuanlin-to-Kaohsiung widening project, Yuanlin Dalin End Bid 521 subsequent Bid B project.	20070627	20080619
11	2007	Sun Yat-sen Freeway Yuanlin-to-Kaohsiung widening project, Yuanlin Dalin End Bid 521 subsequent Bid C project.	20070627	20080613
12	2007	Sun Yat-sen Freeway Yuanlin-to-Kaohsiung widening project, Yuanlin Dalin End Bid 531 subsequent Bid A project.	20070622	20080624
13	2007	Sun Yat-sen Freeway Yuanlin-to-Kaohsiung widening project, Yuanlin Dalin End Bid 531 subsequent Bid B project.	20070724	20080530
14	2007	Sun Yat-sen Freeway Yuanlin-to-Kaohsiung widening project, Yuanlin Dalin End Bid 531 subsequent Bid C project.	20070623	20080629
15	2007	National Freeways bridges seismic assessment and retrofit project (Phase 1) Bid M12.	20070704	20091127
16	2007	National Freeways bridges seismic assessment and retrofit project (Phase 1) Bid M14.	20070731	20091127
17	2007	Sun Yat-sen Freeway Yuanlin-to-Kaohsiung widening project, Bid 571A Dinggin system interchange adding the southbound right-turn overhead project connecting to the ramp of National Freeway No. 10.	20070713	20090227
18	2007	National Freeway No. 1, Bid 5316 Shuishang Interchange access road project	20071008	20081030
19	2007	New-built East-West Expressway Wanli Ruibin Lane Dahua System Interchange project (Bid 156 of National Freeway No.1).	20071017	20101114
20	2007	Sun Yat-sen Freeway Yuanlin-to-Kaohsiung widening project, Zhong-sha bridge widening (Bid P5122) submerged weir restoration project.	20070501	20080102
21	2007	Sun Yat-sen Freeway Xiluo agricultural road surface improvement and drainage project (Bid P521N).	20070621	20071030
22	2007	Sun Yat-sen Freeway Yuanlin-to-Kaohsiung widening project, Yuanlin Dalin End Bid 521K project.	20070713	20080205
23	2007	Sun Yat-sen Freeway Bid 521 sta. 240k northern agricultural road and drainage restoration project (Bid P521V).	20070815	20080717
24	2008	National Freeway No. 1 Bid 5315 Chiayi Interchange access road project	20080110	20081212
25	2008	National Freeways bridges seismic assessment and retrofit project (Phase 1) Bid M12A Dansuie River Bridge Sanchung floodplain constructions.	20080520	20090628
26	2008	National freeways five drainage improvement projects at the Fuhua village & Fuguo village of Yongkang District, Tainan City.	20080108	20081030
27	2008	Sun Yat-sen Freeway Yuanlin Dalin End Bid 511, 213k+700~214k+200 drainage improvement project (Bid P5111).	20080102	20080624
28	2008	National Freeway No. 1 drains and Shelin Village drainage integration improvement project.	20080514	20081030
29	2008	Keelung Harbor W. bank access roads bridges seismic assessment and retrofit project Bid M33B.	20081002	20091111
30	2008	National Freeway No. 1 southbound 365k+800~366k+300 Orient Qilin Building neighborhood noise improvement trial project.	20080401	20081219
31	2008	Sun Yat-sen Freeway Yuanlin-to-Kaohsiung widening project, Yuanlin Dalin End Bid P511I restoration project.	20080507	20081017



No.	Year	Project Name	Bid-awarded date	Work-completed date
32	2008	Sun Yat-sen Freeway 362k+600~363k+800 road-bank slop reinforcement project.	20080813	20081215
33	2008	Vehicle detector loop coil restoration project.	20080828	20081129
34	2008	Central Region Traffic Control Center Automatic Vehicle Identify System restoration project.	20081008	20090225
35	2008	National Freeway No. 1 N252k+000~256k+800, N268k+000~269k+300 emergency pavement restoration project.	20080827	20080930
36	2008	National Freeway No. 1 Jingliao(P1L, P1L) and Xiajiadong (P1L) drainage channel bridge pier seismic assessment and retrofit project	20080624	20090131
37	2008	The Expressways North Traffic Control Systems Project	20081110	20091231
38	2008	The Expressways Central Region Traffic Control Center Project	20081113	20101012
39	2008	National Freeway No.2 Widening Project, Bid H21B Dayuan Interchange to Dazhu Interchange sect.	20081128	20100704
40	2009	Taipei County Special Highway 2, Tucheng Interchange connection project (National Freeway No.3 Bid B24).	20090311	1000327
41	2009	National Freeway No.2 Widening Project, Bid H21C.	20090417	20101228
42	2009	National Freeway No.2 Widening Project, Bid H31.	20090420	1001202
43	2009	National Freeway No.2 Widening Project, Bid H52.	20090428	1001231
44	2009	National Freeway No.2 Widening Project, Bid H42.	20090428	1001231
45	2009	National Freeway No.2 Widening Project, Bid H61.	20090429	1001130
46	2009	National Freeway No.2 Widening Project, Bid H21A.	20090623	1000816
47	2009	Taiwan High Speed Railway Yunlin Station Access Road System improvement Project--new-built Doliu Access Road-- National Freeway No.1 new-built Huwei Interchange project.	20091020	1010416
48	2009	Freeway No.1 new-built Minhsiung Interchange project (Bid 534).	20091029	1001220
49	2010	Freeway No.1 new-built Tongluo Interchange project (Bid 434).	20100304	20120418
50	2011	National Freeways bridges seismic assessment and retrofit project Bid M12 subsequent project.	20110107	20130217
51	2011	Freeway No.1 new-built Touwu Interchange project (Bid 425).	20110302	20130610
52	2011	Improvement project for Hsintai-Fifth-Road interchange and Nangang interchange on National freeway No. 3.	20110322	20130228
53	2011	Freeway No.3 new-built Nantou Interchange project (Bid C14).	20110420	20140220
54	2011	Co-work on the MOEA Chiyang lake (Kao-Ping great lake) sand/soil transporting driveway project (Bid No. L31).	20111014	Not yet started
55	2011	Freeway No.3 new-built Liuying Interchange project (Bid D24).	20111115	Not yet started